



**Sigma Tau Delta
2024 Centennial Convention
April 3 – 6 • St. Louis, MO**

EnglishConvention.org

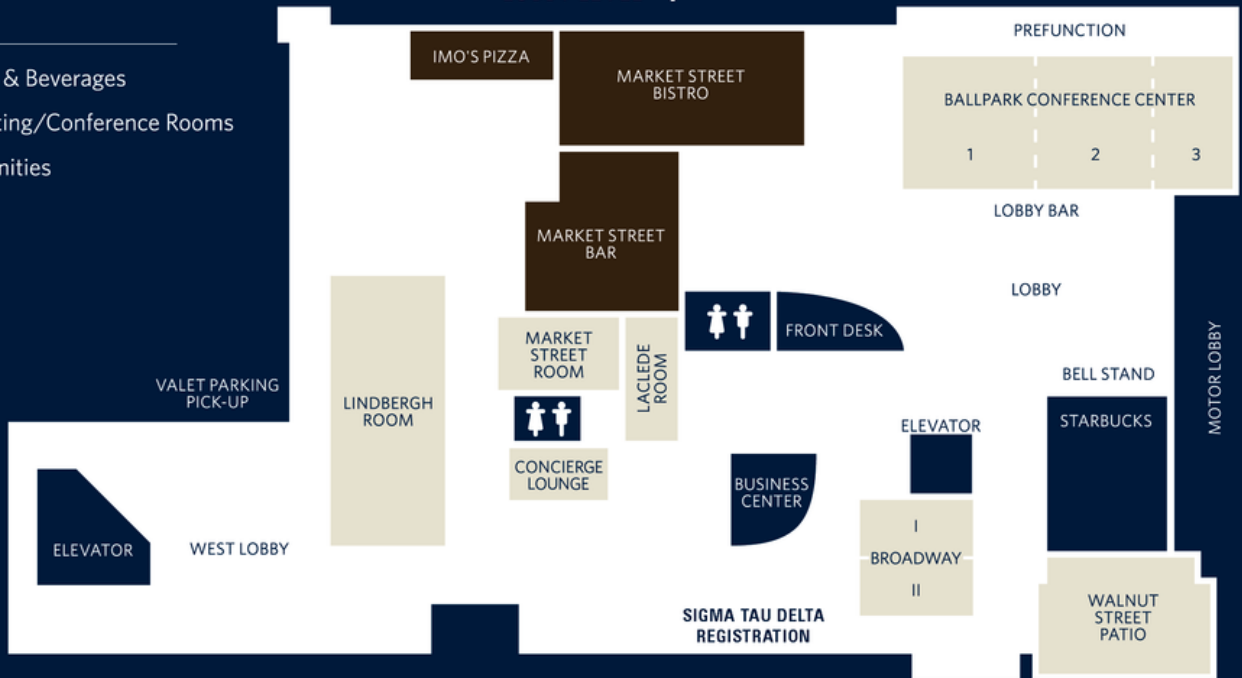
Convention Map

FLOOR MAPS

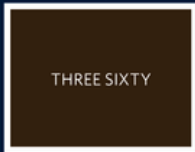
KEY

- Food & Beverages
- Meeting/Conference Rooms
- Amenities

LOBBY LEVEL 1



26TH FLOOR ROOFTOP BAR



4TH FLOOR WEST TOWER



SECOND FLOOR CONVENTION LEVEL 2



Ballpark 1 1
 Ballpark 2 1
 Ballpark 3 1
 Broadway 2 1
 Gateway 1 2

Gateway 2 2
 Gateway 3 2
 Gateway 4 2
 Gateway 5 2
 Grand Suite 1 ... 2

Grand Suite 2 ... 2
 Grand Suite 3 ... 2
 Laclede 1
 Lindbergh 1
 Manchester 4

Market Street 1
 Salon A-D 2
 Salon E 2
 Salon F 2
 Salon G 2

Table of Contents

Convention At-A-Glance	2 - 3
2024 Convention Theme	4
Land Acknowledgement	5
What to Know First	6
Alumni & Professional Development Workshops	7
Keynote Speakers	8
Convention Highlights	9 - 10
General Business Meeting & Regional Caucuses	11
Leadership Opportunities	12
Suggestions for Chairs and Moderators	13
Concurrent Sessions & Full Convention Schedule	14 - 50
Sigma Tau Delta's Centennial Celebration	51
English Honor Societies	52
Sigma Tau Delta Journals	53
2025 Convention	54
Convention Supporters	55-56



SIGMA
TAU
DELTA

INTERNATIONAL
ENGLISH
HONOR SOCIETY



The Sigma Tau Delta 2024 Centennial Convention has gone mobile! The most up-to-date schedule, maps, reminders, and more are available on our free mobile app. Download it now at <https://builder.guidebook.com/g/englishconvention2024/>.

Passphrase: englishconvention2024

Convention At-A-Glance

Wednesday, April 3

3:00-9:00	Registration Broadway Foyer, 1
6:45-8:15	Opening Ceremony Salon A-D, 2
8:30-9:00	Abecedarian Meeting Salon A-D, 2
9:00-10:00	Rectangle Reading Salon A-D, 2
10:00-11:00	Open Mic Salon A-D, 2

LEGEND

The last number indicates whether the room is on the first, second, or fourth floor.

Example: Salon A-D, 2 is located on the second floor.

SHOP AT

Shop English (Broadway 2, 1)
Bookstore Sales (Arch View Foyer, 2)
Chapter Merchandise (Grand Foyer, 2)

Thursday, April 4

7:30-4:30	Registration Broadway Foyer, 1
8:00-9:15	Concurrent Session A ❖ Advisor Meeting & Open Discussion Lindbergh, 1 ❖ Student Leadership Event Arch View Ballroom, 2
9:30-10:45	Concurrent Session B ❖ Advisor Meeting & Open Discussion Lindbergh, 1 ❖ Alumni Workshop I Salon A-D, 2 ❖ Alumni Workshop II Gateway 1, 2 ❖ Alumni Workshop III Gateway 2, 2
11:00-12:15	Concurrent Session C Breakout Rooms ❖ Race Talk in the Literature Classroom —Sophia Sarigianides Salon A-D, 2
11:30-6:00	Chapter Displays Grand Foyer, 2 Chapter Merchandise Sales Grand Foyer, 2
12:15-1:30	Lunch (on your own)
12:30-1:30	Student Social Salon Manchester, 4

1:45-3:00

Concurrent Session D

Breakout Rooms

❖ **Designing Literature Curriculum for Antiracist Outcomes**
—Sophia Sarigianides
Gateway 2, 2

❖ **How to Talk to English Majors about Careers**—Janine Utell
Salon A-D, 2

3:15-4:30

Concurrent Session E

Breakout Rooms

❖ **What Can You Do With an English Major?**—Janine Utell
Salon A-D, 2

4:45-6:00

Concurrent Session F

❖ **Chapter Share**

Arch View Foyer, 2

❖ **Research in the Round**
Arch View Ballroom, 2

❖ **Alumni Mixer**
Lindbergh, 1

6:00-7:15

SKD Meet and Greet

Meet in Hotel Lobby

Dinner (on your own)

6:15-7:15

Student Social Salon

Manchester, 4

7:30-8:30

Maryfrances Wagner, Keynote Speaker

Salon A-D, 2

8:30-9:30

Maryfrances Wagner, Book Signing

Walnut Foyer, 2

9:00-11:30

Bad Poetry

Salon A-D, 2

Convention At-A-Glance

Friday, April 5

7:30-2:30	Registration Broadway Foyer, 1
8:00-3:00	Chapter Merchandise Sales Grand Foyer, 2
8:00-9:00	SKD Advisor Meeting Ballpark 3, 1
8:00-9:15	Concurrent Session G Breakout Rooms
9:00-9:00	Chapter Displays Grand Foyer, 2
9:30-10:45	Concurrent Session H Breakout Rooms ❖ Haiku Workshop with Maryfrances Wagner Market Street Room, 1 ❖ Conversation with Carl Phillips Lindbergh, 1
11:00-12:45	General Business Meeting Salon A-D, 2 *\$200 PARTICIPATION INCENTIVE ❖ Eastern Region Caucus Salon A-D, 2 ❖ Far Western Region Caucus Salon E, 2 ❖ High Plains Region Caucus Salon F, 2 ❖ Midwestern Region Caucus Gateway 2, 2 ❖ Southern Region Caucus Gateway 1, 2 ❖ Southwestern Region Caucus Salon G, 2

11:00-1:00	SKD Linda Kraeger Awards Luncheon Meet in Hotel Lobby
12:45-2:00	Lunch (on your own)
1:00-2:00	Student Social Salon Manchester, 4
2:15-3:30	Concurrent Session I Breakout Rooms
3:45-4:45	Carl Phillips, Keynote Speaker Salon A-D, 2
4:45-5:45	Carl Phillips, Book Signing Walnut Foyer, 2
5:45-6:45	President's Reception for Faculty and Alumni Arch View Ballroom, 2
5:45-7:45	Dinner (on your own)
6:00-7:45	Student Social Salon Manchester, 4
8:00-10:00	Literary Trivia Pub Night Salon A-D, 2

***VOTING DELEGATE**

REIMBURSEMENT

Each chapter sending a voting student delegate to Friday's Business Meeting and Regional Caucuses qualifies for a reimbursement check of \$200 (\$400 for chapters outside of the continental US).

Required: One student chapter member must complete the digital attendance form at BOTH the Business Session AND their Regional Caucus. A QR code link will be provided at both sessions.

Saturday, April 6

7:30-10:30	Registration Broadway Foyer, 1 Chapter Displays Grand Foyer, 2 Chapter Merchandise Sales Grand Foyer, 2
8:00-9:15	Concurrent Session J Breakout Rooms

9:30-10:45	Concurrent Session K Breakout Rooms
11:00-12:15	Concurrent Session L Breakout Rooms
12:45-3:00	Convention Awards Luncheon Salon A-D, 2

Convention Theme



By Glen Brewster
2024 Convention Chair

As Sigma Tau Delta approaches its centennial anniversary (1924-2024), its many facets reflect the state of English-related studies: in flux, in transition, flexible, fluid, evolving, tradition and convention absorbing influence and innovation. New subjects, authors and audiences, media, and concern are built upon a foundation of respect for history and the wisdom of predecessors while always in process of revising and renewing them for each succession of students and teachers.

The Centennial Convention will be a good time to reflect on the changes in culture and higher education in particular over these decades. In 1924 when Sigma Tau Delta was founded at Dakota Wesleyan University, the total number of students enrolled in higher education in the US, predominately affluent white men, was a little more than half a million (double the number from a decade before, according to the Higher Education Biennial Survey, 1922-1924 [1926]). Today, that number is over 10.3 million, including a much wider range of the population (though many groups are still woefully underrepresented.)

Published that year were novels by Agatha Christie (*Poirot Investigates*), Edna Ferber (*So Big*) E. M. Forster (*A Passage to India*), Thomas Mann (*The Magic Mountain*), and Edith Wharton; books of poetry by HD (*Hilda Doolittle*), A. A. Milne, Pablo Neruda, and W.B. Yeats; plays by Bertolt Brecht, Sean O'Casey (*Juno and the Paycock*), and Eugene O'Neill (*Desire Under the Elms*), and nonfiction by W. E. B. DuBois and H. G. Wells—and, ominously, Adolf Hitler (*Mein Kampf*). Robert Frost received the Pulitzer Prize in poetry for New Hampshire; and Leonard and Virginia Woolf moved their Hogarth Press to their new home in Bloomsbury. Perhaps signifying a transition from modernism to post-modernism, James Baldwin and Truman Capote were born; and Joseph Conrad and Franz Kafka died. We expect that many presentations will explore the myriad ways in which the precursors inform and are transformed by their descendants.

It is appropriate that this Centennial Convention will be celebrated in St. Louis, a crossroads and river confluence, the "gateway to the west," a meeting ground for Indigenous Nations since before European exploration. We will gather to share our stories, to meet new people and old friends, and to learn new ways of seeing.

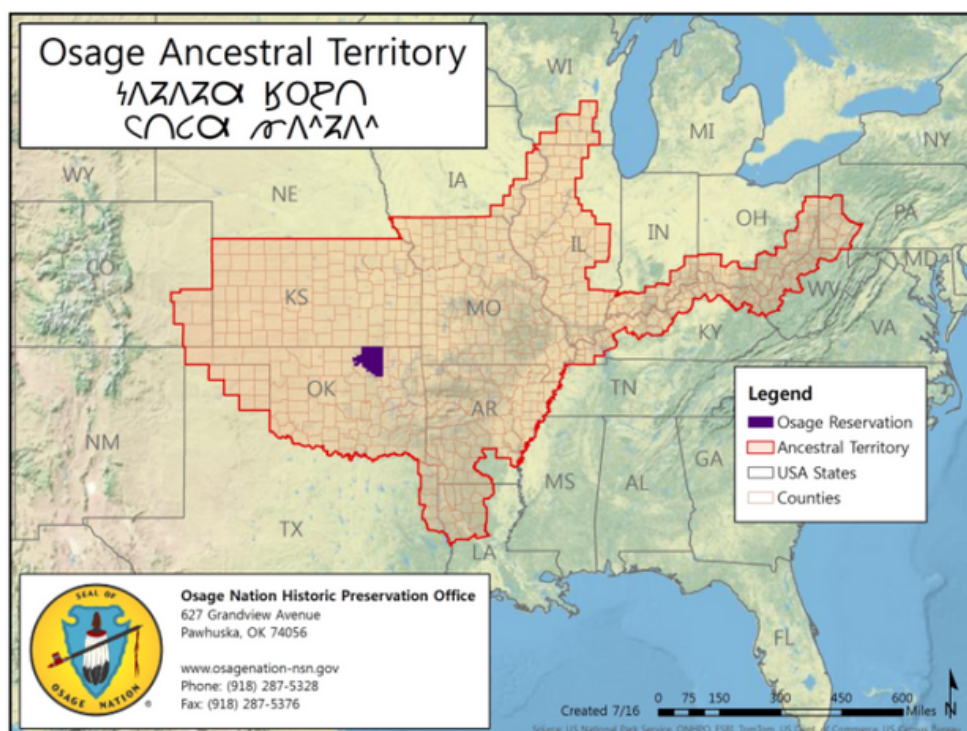
Land Acknowledgement

Sigma Tau Delta dedicates a portion of our convention program and physical space to acknowledge and celebrate the Native American life that calls the land on which we convene their rightful home. Sigma Tau Delta specifically honors the Osage Nation and Otoe-Missouria Tribe who belong to the land on which we hold this year's convention, an extraordinary home and culture that once spanned much of the midwestern United States. These are just some of the people we pay our respects to, as many Native tribes have ancestral claims to this area.

Furthermore, our convention site falls beneath the parameters of the Indian Removal Act of 1830, one of the countless acts that willfully exploited and betrayed indigenous trust toward colonizing forces, which the Osage Nation and Otoe-Missouria Tribe ultimately fell victim to throughout history. While atrocities such as treaty violations, land theft, and forced displacement via the Indian Removal Act brutalized the Native peoples of this land and violently evicted them from their home, we recognize their ancestors and contributions to culture stay with us now and forever. We affirm the Osage and Otoe-Missouria connection and synergy with this land on which we convene as much as we envision a future that returns them to this place that they rightfully call home, as much as we live in a present that acknowledges their people's unforgettable perseverance and joy.

As an honor society dedicated to the educational and academic pursuits of literature, storytelling, and meaning-making, we must do our part to lift the stories of displaced, marginalized peoples who call the land we occupy their home. We encourage all convention attendees to pay similar respect to the rightful harbinger's of their chapter's land, as well as to visit the [Osage Nation](#) and [OM Tribe of Oklahoma](#) | [The Otoe-Missouria Tribe](#) websites to learn more about the tremendous Osage and Otoe-Missouria cultures and identities that continue to thrive today.

This statement was drafted by the Sigma Tau Delta Diversity, Equity, and Inclusion Task Force and the Student Leadership Committee. Careful attention to and consultation of online resources run by indigenous communities and institutions was given, including the [Native Governance Center](#) and [Native Land Digital](#).



What to Know First

Abecedarian: The ABCs of Convention | New to convention? Attending alone?

Wednesday, April 3, 8:30 p.m.

Salon A-D, 2

Calling all convention novices!

Abecedarian: "a person who is inexperienced in a particular subject; a novice" (OED). Convention can be overwhelming, especially with so many activities from which to choose, as well as an entire new city to explore. At past conventions, first-time and solo attendees have told us stories of being "adopted" by a larger chapter or of having found a convention buddy on their own. But breaking out of our comfort zones when we're in a new place, surrounded by hundreds of other new people, can be difficult. This quick and informal meeting will help you learn how to navigate through the convention, giving you recommendations for making the most of your time and introducing you to other Abecedarians.

Presenters:

Ami Comeford—Utah Tech University (UT)

Autumn Koors-Foltz—University of Maine at Farmington (ME)

Rachel Harvey—Friends University (KS)

Gabrielle Hardoin—University of Evansville (IN)

Sigma Tau Delta Convention App

We are excited to announce the app for the Sigma Tau Delta 2024 Centennial Convention, powered by Guidebook, is now available. With this resource, you have access to the most up-to-date information as well as networking tools.

Visit <https://guidebook.com/g/englishconvention2024/> to download the app and access the guide on your iOS and Android device.

Please use this passphrase: englishconvention2024

Prefer the web version? Some content and networking tools may be available online.

guidebook



Convention Name Badges Must be Worn at All Times

Only those with name badges will be permitted to attend concurrent sessions, presentations by guest speakers, other convention events, and activities. Regions are indicated by dot colors:

Eastern—Yellow

Far Western—Pink

Alumni—Gray

High Plains—Red

Midwestern—Blue

SKD—Green

Southern—Purple

Southwestern—Orange

Alumni & Professional Development Workshops

Thursday, April 4

B-02: English Skills in the Legal World | 9:30-10:45 | Salon A-D, 2

Katherine Polley, an alumna of Metropolitan State University of Denver (CO), will describe the skills needed for success in a law firm: skills already rooted in the work of English majors and minors.

B-03: Consulting and Advising | 9:30-10:45 | Gateway 1, 2

Rica Lelina, an alumna of The University of Texas at Dallas (TX), will describe her path from undergraduate work in English to running a university Writing Center. Abigail Shipley Orlando, an alumna of PennWest Clarion (PA), works as a consultant, contracting with individual clients who purchase her English major skills for a variety of purposes.

B-04: Publishing and Editing | 9:30-10:45 | Gateway 2, 2

Many of us remember our first books. Robin Alvarez, an alumna of PennWest Clarion (PA), will describe her work in unconventional publishing. Therese Holzapfel, also an alumna of PennWest Clarion (PA), will describe her work as a copy editor for research publications.

C-16—Race Talk in the Literature Classroom | 11:00-12:15 | Salon A-D, 2

Participants will engage in an interactive session with Sophia Sarigianides from Westfield State University (MA) focused on addressing race and racism through dialogue in literature classrooms. Participants will interact with a transcript of a classroom discussion to see specific examples of "white talk" and how it gets in the way of effectively addressing race in dialogue. We will discuss effective strategies for addressing race via literature discussions.

D-16—How to Talk to English Majors about Careers | 1:45-3:00 | Salon A-D, 2

Students come to the English major because they love reading and writing, and to build the skills critical for success in future careers—but they don't always feel like they are getting the advice and preparation they need. In this workshop with Janine Utell from the Modern Language Association, you will learn how to advise students about career pathways, including reflection on transferable skills, talking about career outcomes, and mapping curricular and co-curricular activities onto the steps needed for career preparation.

D-18—Designing Literature Curriculum for Antiracist Outcomes | 1:45-3:00 | Gateway 2, 2

In this session with Sophia Sarigianides from Westfield State University (MA), participants will be introduced (or re-introduced) to principles of backwards design of curriculum and learn how to utilize it to design and integrate robust racial literacy objectives in relation to literary learning goals in order to address race through literature instruction.

E-16—What Can You Do With an English Major? | 3:15-4:30 | Salon A-D, 2

If you're like many English majors, you picked your field of study because of personal interest and a passion for the subject—but when people tell you, "You can do anything with an English major!," you find yourself feeling more anxious than inspired. In this workshop with Janine Utell from the Modern Language Association, you will learn how your English major has prepared you for a variety of career pathways, and how to map those pathways step by step.

Keynote Speakers



Carl Phillips

Friday, April 5, 9:30 a.m. | Lindbergh, Room, 1
A Conversation with Carl Phillips

Friday, April 5, 3:45 p.m. | Salon A-D, 2
Keynote Reading, followed by book signing

Introductions:

Glen Brewster—Westfield State University (MA)

Kelly Taylor—Chapman University (CA)

Carl Phillips is the author of sixteen books of poetry, most recently *Then the War: And Selected Poems, 2007-2020*. His honors include the 2023 Pulitzer Prize, the 2021 Jackson Prize, the Aiken Taylor Award for Modern American Poetry, the Kingsley Tufts Award, a Lambda Literary Award, the PEN/USA Award for Poetry, and fellowships from the Guggenheim Foundation, the Library of Congress, the American Academy of Arts and Letters, and the Academy of American Poets.



Maryfrances Wagner

Thursday, April 4, 7:30 p.m. | Salon A-D, 2
Keynote Reading, followed by book signing

Introductions:

Carie King—The University of Texas at Dallas (TX)

Eunice Tan—Union University (TN)

Friday, April 5, 9:30 a.m. | Market Street Rm, 1
Haiku Workshop with Maryfrances Wagner

Missouri Poet Laureate for 2021-2023, Maryfrances Wagner is the author of nine books, including *Solving for X*; *Red Silk*, winner of the Thorpe Menn Literary Excellence Award; *The Silence of Red Glass*; *The Immigrants' New Camera*; *Light Subtracts Itself*; and *Salvatore's Daughter*. As poet laureate, Wagner created the Missouri Haiku Project to encourage the writing and dissemination of poetry throughout the state.

Convention Highlights

Wednesday, April 3

Opening Ceremony: St. Louis Literary History & Special Guest | 6:45-8:15 | Salon A-D, 2

Convention Co-Chairs Glen Brewster, AmiJo Comeford, and Carie King, and Board of Directors President Shannin Schroeder welcome attendees to the Sigma Tau Delta 2024 Convention and kick off our Centennial Celebration! Following their welcome, a representative from Left Bank Books (the official bookseller for the 2024 Convention), will offer a brief introduction to “Literary St. Louis” before special guest Donika Kelly shares poetry from her books *The Renunciations* and *Bestiary*.

Rectangle Reading | 9:00-10:00 | Salon A-D, 2

Introduction: Carie King, Managing Editor of Publications, The University of Texas at Dallas (TX)
The Sigma Tau Delta *Rectangle* (founded in 1931) is an annual journal of creative writing that publishes fiction, nonfiction, and poetry.

Open Mic | 10:00-11:00 | Salon A-D, 2

Emcee: Kelly Taylor, Chapman University (CA)

Attendees are invited to share their short, original creations at Open Mic Night. Bring your best poetry, flash fiction, and other short pieces to perform for the friendliest audience you will ever find. This event is sponsored by the Student Leadership Committee and is open to all attendees.

Thursday, April 4

Student Leadership Event | 8:00-9:15 | Arch View Ballroom, 2

Have you ever wanted to learn how to write an effective cover letter? Start to build your own character or story world? Write collage poetry? These and many more activities will be featured at the Student Leadership workshop! Join student leaders from each of the six regions as they guide you through the process of writing poetry, crafting a cover letter, effectively editing stories, and much more. Choose topics that are of interest to you and rotate stations to leave the workshop with tangible, creative, inspired work in hand!

Chapter Advisor Meeting & Open Discussion | 8:00-10:45 | Lindbergh, 1

Presenters: Carrie Fitzpatrick, Alvernia University (PA) & Leigh Dillard, University of North Georgia, Gainesville (GA)

Advisors are invited to learn and share ideas about recruitment, member engagement, fundraising, chapter activities, campus events, and promoting Society opportunities to chapter members. Topical breakout sessions led by Sigma Tau Delta Regents.

Chapter Share | 4:45-6:00 | Arch View Foyer, 2

Come learn what some of your fellow chapters are doing on their campuses. Presenting chapters will share ideas about service projects; fundraising ideas; entertaining programming, academic programming; field trips; recruitment schemes; regional events or events with other chapters or other honor societies; induction program ideas; crafts, etc.

Convention Highlights

Thursday, April 4 (Continued)

Research in the Round | 4:45-6:00 | Arch View Ballroom, 2

Participants will circulate from table to table in a timed, speed-style format, where (after a brief introduction from the Table Hosts) they discuss the topic, answering the two questions or formulating one of their own about the same subjects. Pre-registration required.

Alumni Mixer | 4:45-6:00 | Lindbergh, 1

Host: Kaitlynn Sass, Indiana University of Pennsylvania (PA)

Calling all alumni! Whether you're currently an Advisor, a long-time convention goer, or a new alum, come spend time, network, and chat with a few fellow alumni. Kaitlynn will be available to both give general updates on Society plans for alumni and take questions and suggestions to bring back to the Board so as to improve the alumni experience. Hope to see everyone there!

Bad Poetry | 9:00-11:30 | Salon A-D, 2

Emcee: Kaitlynn Sass, Indiana University of Pennsylvania (PA)

Convention attendees bring you the best and worst in bad poetry. Whether it's a sincerely bad poem written in middle school or a comedy poem lampooning annoying poetic trends, members present the worst original poetry they have ever written in this fiercely funny competition. Members take this competition very seriously, and there are more and better prizes this year than ever before. Come prepared to laugh until you cry. This event is sponsored by the Student Leadership Committee and is open to all attendees.

Friday, April 5

Literary Trivia Pub Night | 8:00-10:00 | Salon A-D, 2

Sponsored by: National Council of Teachers of English (NCTE)

Join Student Leadership for a night of literary trivia! Leave the stress of presentations and travel at the door and come show off your literary prowess. Compete alongside (or against!) friends and chapter members for Sigma Tau Delta swag and other great prizes. Questions will cover a wide array of genres and time periods—and might even test your Sigma Tau Delta knowledge!

Saturday, April 6

Convention Awards Luncheon | 12:45-3:00 | Salon A-D, 2

The Convention Awards Luncheon is the culminating event of the convention, regularly getting top reviews in post-convention surveys. Join hundreds of attendees at this festive sit-down luncheon, and be present when thousands of dollars are awarded for the best convention presentations. Sport your red and black finery while celebrating your membership in Sigma Tau Delta or Sigma Kappa Delta. This is a \$20.00 extra ticketed event.

Student Social Salons

Occurring during lunch and dinner breaks on Thursday and Friday (Manchester, 4), these sessions hosted by the Student Leadership Committee offer a low-key hangout for attendees to play games, write blackout poetry, and destress from the hustle and bustle of convention.

General Business Meeting & Regional Caucuses

WHO should attend these events—and WHY?

ALL convention attendees are urged to attend Friday's General Business Meeting and Regional Caucuses to get the inside scoop on who's who and what's happening in Sigma Tau Delta. Don't miss this opportunity to participate in Sigma Tau Delta at regional and Society levels. The business meeting at the annual convention is where our chapters elect our next generation of leaders.

ATTEND + VOTE = \$200

For all elections, each chapter gets one vote and appoints a student member as its official voting delegate. They cast the chapter's vote in any elections and on any business decisions made during the General Business Meeting and in the Regional Caucuses. **Every chapter with an official voting student delegate present at Friday's General Business Meeting AND the chapter's Regional Caucus is eligible to receive a \$200 reimbursement** (\$400 for chapters not in the continental US).

In addition to the financial incentive for attending, these meetings are the opportunity for students, Faculty Sponsors, and alumni to participate in the governance and planning of Sigma Tau Delta. Participants gain firsthand information on the Society's operations, meet the Board of Directors (Officers, Regents, Student Advisors) and Student Representatives, and help shape Sigma Tau Delta's future by voting on candidates for Society positions.

WHAT happens at the General Business Meeting and in Regional Caucuses?

Friday, April 5 | 11:00-12:45 | Salon A-D, 2

At the General Business Meeting an official roll-call of chapters is taken. Sigma Tau Delta Officers give brief reports and make important announcements concerning the Society.

Immediately following the General Business Meeting, students and faculty meet in their respective Regional Caucuses with their current Regent, Student Representative, and Associate Student Representative. Here chapters make important decisions about regional activities and provide suggestions for how to deepen and expand their resources.

HOW does a chapter receive a reimbursement check?

Each chapter's official voting student delegate must complete forms provided via QR code during Friday's General Business Meeting AND at the Regional Caucus following the Business Meeting. The official voting delegate must (a) be a student member and (b) attend and participate in BOTH the General Business Session and the chapter's Regional Caucus. The reimbursement checks for \$200/\$400 will be sent to chapters from the Central Office shortly after the convention. It is customary for delegates to provide their home chapters with a report on the convention (the business, the sessions, etc.).

WHAT about Alumni?

Alumni members and current students about to become alumni members are encouraged to attend Thursday's Alumni Mixer (4:45 p.m. in Lindbergh, 1) to network with fellow alums. The Alumni Workshops at 9:30 a.m. on Thursday are also an excellent place to learn about how your fellow alumni members are utilizing their English degrees.

Leadership Opportunities

Sigma Tau Delta offers a number of opportunities for members to take part in the management of the Society. Participants gain firsthand information on the Society's operations as well as play a part in the governance of and planning for Sigma Tau Delta.

Student and alumni members interested in expanding their Sigma Tau Delta experience beyond the chapter level are encouraged to volunteer for leadership opportunities at the Society's regional and international levels.

Student Advisor

One of the two Student Advisors (SAs) is selected by the Board of Directors each spring. SAs serve for two years and provide the student voice as voting members of the Board of Directors. They also chair the Student Leadership Committee. SAs advocate for the needs and concerns of the student members of Sigma Tau Delta. The two SAs work together promoting the goals of the Society among its members.

Eligibility

- Must be a Sigma Tau Delta member at a school with an active chapter; and
- Must plan on attending a school with an active chapter, through the end of appointed two-year term (June 2024 – May 2026).

Student Representative and Associate Student Representative Positions

The 2024-2025 Student Representatives (SRs) and Associate Student Representatives (ASRs) will be appointed by the corresponding Regent. There will be one SR and one ASR appointed for each of the six Regions. Please refer to the [Chapter Directory](#) to determine which region your chapter is in.

Eligibility

- Must be a Sigma Tau Delta member at a school with an active chapter; and
- Must plan on attending a school with an active chapter, within the Region you apply for, through the end of appointed one-year term (June 2024 – May 2025).

Alumni Representative

To represent the voice of the alumni members of Sigma Tau Delta (i.e., members who are no longer students or who are graduate students at a program without an active Sigma Tau Delta chapter), the Board of Directors has created the Alumni Representative position. The Board of Directors will appoint the successful candidate to a two-year term (with a two-term limit).

Eligibility

- Must have graduated from an undergraduate program; and
- Must have been a member in good standing of an active chapter.

Application Deadline

April 11, 2024

**LEARN MORE
& APPLY**



Suggestions for Chairs and Moderators

Please check the Convention App Event Schedule for the most up-to-date information for presenters, chairs, moderators, and sessions.

Student Chairs

- Arrive at your session at least five minutes prior to the beginning of the session.
- Before formally starting the session, introduce yourself to the presenters and check to see if all of them have arrived; check the pronunciation of each presenter's name and their pronouns.
- Remind presenters that they have no more than 15 minutes and that the moderator will keep track of the time.
- Encourage presenters to stand while they present so all the members of the audience may see and hear them.
- If a presenter has a handout, assist them by distributing it as their presentation begins.
- Begin the session on time. Timing is tight, so assist the moderator in keeping track of the time.
- Ask the audience to hold all questions until all presenters have finished.
- Ask everyone to turn off cell phones or other electronic devices.
- Sit in the front row. Immediately before each presenter begins reading, stand up and off to one side as you introduce that presenter by name and college/university or alumni affiliation, include any additional details you collected, and give the title of the work being presented. Follow the order of presenters as listed in the program.
- Jot down thoughtful comments and questions as the presenters read and be willing to participate in the discussion of the works with the moderator, presenters, and audience, but yield the floor to session attendees.
- If a faculty moderator does not arrive, be ready to ask a faculty member in the audience to moderate, or be ready to take on the additional duties of the moderator. When you get a break, please inform the staff at the registration desk about the missing moderator.

Faculty Moderators

- Well before your assigned session, check the time and location for your session (available in the 2024 Convention Program and the convention app). Last-minute changes to the schedule will be posted on the convention app.
- Arrive at your session at least five minutes prior to the beginning of the session.
- Before the session begins, introduce yourself to the chair and the presenters, check the pronunciation of each presenter's name and their pronouns, check to see if all of them have arrived, and help your chair begin the session on time.
- Remind presenters that they have up to 15 minutes. Keep track of the time and, if needed, gently remind presenters when there is only a minute or two left.
- As time permits, facilitate a discussion of the works with the presenters, the chair, and the audience. If the audience hesitates, be willing to step in with your own question(s), but yield the floor to session attendees and the presenters. If possible, make sure that each presenter is involved in the discussion even if you have to direct a question to them.
- Intervene if an audience member is dominating the discussion or is being rude or inappropriate. You are the "safety net" for the often nervous first-time presenters.
- Conclude the session by thanking the attendees and by asking for another round of applause for the presenters.
- If the chair does not arrive, please take on the duties of the chair. At your next opportunity, inform the staff at the registration table about the missing chair.
- Moderators, check the Moderators page on convention app under Convention Info for suggested questions to facilitate a good session discussion.

Concurrent Sessions & Full Convention Schedule

Wednesday, 3 April

- 3pm **Registration**
Broadway Foyer (1)
- 3pm **Shop English Pop-Up Store**
Broadway 2 (1)
- 6:45pm **Opening Ceremony**
Salon A-D (2)
Chaired by: Glen Brewster and Ami Comeford and Carie King and Shannin Schroeder
- 7pm **St. Louis Literary History & Special Guest**
Salon A-D (2)
Chaired by: Zoe Talbot
- 8:30pm **Abecedarian Meeting**
Salon A-D (2)
Chaired by: Autumn Koors-Foltz and Rachel Harvey and Gabrielle Hardoin and Ami Comeford
- 9pm **Rectangle Reading**
Salon A-D (2)
Chaired by: Carie King

- 10pm **Open Mic**
Salon A-D (2)
Chaired by: Kelly Taylor

Thursday, 4 April

- 7:30am **Registration**
Broadway Foyer (1)
- 8am **Shop English Pop-Up Store**
Broadway 2 (1)
- 8am **A-01—Chapter Advisor Meeting & Open Discussion**
Lindbergh (1)
Chaired by: Caroline Fitzpatrick and Leigh Dillard
- 8am **A-02—Student Leadership Event**
Arch View Ballroom (2)
Chaired by: Kaitlynn Sass and Autumn Koors-Foltz
- 9:30am **B-03—Alumni Professional Development Workshop II**
Gateway 1 (2)
Chaired by: Gloria Hochstein
- Consulting and Advising**
» Rica Lelina & Abigail Shipley Orlando

Continued from **Thursday, 4 April**

9:30am **B-02—Alumni Professional Development Workshop I**
Salon A-D (2)
Chaired by: Matt Hlinak

English Skills in the Legal World
» Katherine Polley (Metropolitan State University of Denver (CO))

9:30am **B-01—Chapter Advisor Meeting & Open Discussion Cont.**
Lindbergh (1)
Chaired by: Caroline Fitzpatrick and Leigh Dillard

9:30am **B-04—Alumni Professional Development Workshop III**
Gateway 2 (2)
Chaired by: Kevin Stemmler and Larry Dennis

Publishing and Editing
» Robin Alvarez & Therese Holzapfel

11am **C-01—Common Reader: Relationships and Identity**
Grand Suite 1 (2)
Chaired by: Felicia Steele and Joelle DuFault

Ah-Gong Pancake
» [Eunice Tan](#) (Union University (TN))

the river's door
» [Autumn Koors-Foltz](#) (University of Maine at Farmington (ME))

Wintertide
» [Alexis Crafts](#) (Westfield State University (MA))

All the Unsaid Things
» [Elizabeth Von Loh](#) (The University of Iowa (IA))

Unenchanted Bluff Overlooking Acquaintances

» [Erika Girard](#) (Southern New Hampshire University - Online (NH))

Letters to You and Other Obsessive Endeavors

» [Ashleigh Sabin](#) (Utah State University, Logan (UT))

11am **C-02—Creative Nonfiction: Transformation**
Grand Suite 2 (2)
Chaired by: Alexia McCullison and Lexey Bartlett

Forever Changing

» [Crystal Dilling](#) (Arkansas Tech University (AR))

Growing Pains

» [Belle Wherley](#) (Missouri State University (MO))

A Bone (Auto)Biography

» [Elaine Morgan](#) (Morningside University (IA))

New

» [Kayla Mitchell](#) (University of Texas at Arlington (TX))

11am **C-03—Creative Nonfiction: In Flux**
Grand Suite 3 (2)
Chaired by: Alexis Mills and Nicole Sheets

Locker Room

» [Casey Prociw](#) (Whitworth University (WA))

Snapshots of Displacement, Transition, and Home

» [Eva Agcaoili](#) (Missouri Valley College (MO))

Stitched Together: Accounts of Chronic Illness

» [Matilda Gibb](#) (Utah Tech University (UT))

Learning to Become a Goddess

» [Sasha Jantsch](#) (Slippery Rock University (PA))

Continued from **Thursday, 4 April**

Margaret's Kitchen

» [Jenna Boggs](#) (Olivet Nazarene University (IL))

11 am

C-04—Creative Nonfiction: Change and the Environment

Gateway 1 (2)

Chaired by: Stacy Egan and Allison Sadler

The Sum of All My Parts

» [Jalynn Miles](#) (The University of Texas at Dallas (TX))

I Was Born

» [Katie Piper](#) (University of South Dakota (SD))

Air Quotes

» [Ben Reynolds](#) (Rhodes College (TN))

Living on the Bell Curve

» [Claire Lancaster](#) (Elon University (NC))

Songs from the Marshes

» [Avery Schanbacher](#) (University of Kentucky (KY))

11 am

C-05—Symbolism, Tragedy, and the Gothic

Gateway 3 (2)

Chaired by: Amanda Parrack and Glenn Steinberg

Institutionalization in "The Yellow Wallpaper"

» [Chloe Fleming](#) (Rockhurst University (MO))

Gothic Perdition: "The Fall of the House of Usher"

» [Erin Quinn](#) (Mississippi State University (MS))

How the Complex Human Psyche Leads to Tragedy

» [Leanna Travers](#) (The College of New Jersey (NJ))

Sexuality, Patriarchy, Symbolism in "A White Heron"

» [Chloe Bollin](#) (Cottery College (MO))

11 am

C-06—Early Modern Reflections on Humanity and the Divine

Gateway 4 (2)

Chaired by: Leigh Ann Rhea and Andrew Dampier

On Satan's Humanity in Paradise Lost

» [Amritha Selvarajaguru](#) (The University of Iowa (IA))

Echoes of the Female Saint in The Winter's Tale

» [Abbey Orwig](#) (Union University (TN))

A Critique of the King: Free Will in Macbeth

» [Alexander Herin](#) (Alma College (MI))

11 am

C-07—Jane Eyre and Motherlessness

Gateway 5 (2)

Chaired by: Anna Fischer and Julia Combs

Why Women Worry: Jane Eyre's Fears and Defenses

» [Erin Parker](#) (The College of New Jersey (NJ))

Jane Eyre Finds Balance within a Power Imbalance

» [Catherine Gonzalez](#) (The College of New Jersey (NJ))

Motherlessness

» [Rihi Jain](#) (Rutgers University-New Brunswick (NJ))

Jane Eyre: From Girl to Woman

» [Schuyler Dorchak](#) (St. Joseph's College, NY, Long Island Campus (NY))

11 am

C-08—Storytelling, Monsters, and Popular Culture

Salon E (2)

Chaired by: Annabelle Chipps and Rica Lelina

Continued from **Thursday, 4 April**

Pop Culture's Obsession with Confederate Vampires

» [Claire Roberts](#) (Eastern Illinois University (IL))

Hans Christian Andersen: Stories behind the Tales

» [Megan Robertson](#) (University of North Georgia, Gainesville (GA))

The Monsters We Make

» [Taylor Magness](#) (University of Arkansas - Fort Smith (AR))

Letterpress from the Perspective of a Writer

» [Danielle Parisi](#) (University of Evansville (IN))

11 am

C-09—Economics and Social Class in Literature

Salon F (2)

Chaired by: Corbett Upton and Aoibhinn O'Shea

Octavia Butler's Dawn through a Marxist Lens

» [Alex Moran](#) (Florida State University (FL))

Literary Witness: Disposability of Working Class

» [Saifullah Zalmiyar](#) (University of North Georgia, Gainesville (GA))

The Forced Ripe Fruits of Slavery

» [Javaree Gordon](#) (The College of New Jersey (NJ))

Historical Horrors Haunt Racialized Regression

» [Avinia Sharma](#) (The College of New Jersey (NJ))

11 am

C-10—Adolescence and Ethics

Salon G (2)

Chaired by: Victoria Stoutenger and Serena Richards

They Grow Up So Fast: Girlhood in Little Women

» [Isabel Braico](#) (Illinois State University (IL))

Pooh, Moomin, and Learning to Adult

» [Faith Kazim](#) (Palm Beach Atlantic University (FL))

An Ethical Poetical Critique of The Jungle Book

» [Sarah Pouliot](#) (Palm Beach Atlantic University (FL))

Alcott on Beth: Achieving a Complete Life

» [Campbell Sharpe](#) (Washington University (MO))

11 am

C-11—Storytelling, Feminism, and Power

Market Street Room (1)

Chaired by: PrathimMaya Dora-Laskey and Ashlynn Perry

Analyzing Feminism in Willa Cather's My Ántonia

» [Hannah Squires](#) (Florida State University (FL))

Appropriation of the Ribbon

» [Corinne Coakley](#) (The College of New Jersey (NJ))

Valkyries of Norse: A Court of Silver Flames

» [Isabel Rinaldi](#) (The College of New Jersey (NJ))

Imagery in Green Grass, Running Water

» [Ella Bright](#) (Alma College (MI))

Repression in The Witch of Blackbird Pond

» [Mindy Herrod](#) (Southern Utah University (UT))

11 am

C-12—Poetry, Poe, and Horror

Laclede (1)

Chaired by: Bradley Fest and August Boland

Evil Genius: The Capitalist in Poe's Pym

» [Stephen Turner](#) (Furman University (SC))

From Poe to Present: Dark Romantics Horror Legacy

» [Sophia Jockell](#) (University of North Georgia, Gainesville (GA))

Continued from **Thursday, 4 April**

A Modernist's Naturalist Story in Highsmith

» [Julianna Baker](#) (Morningside University (IA))

Reflections on Hollander's "Swan and Shadow"

» [Ray Fauley](#) (Eastern Illinois University (IL))

11 am

C-13—Original Prose: Creative Exploration of Trauma and Grief

Ballpark 1 (1)

Chaired by: Stacey Kikendall and Sophia Sansone

A Collection of Longing

» [Isabella Melendez](#) (Chapman University (CA))

Blue Gates with Yellow Stars

» [Isabella Libreros](#) (Marist College (NY))

The Garden

» [Ethan Miller](#) (Eastern Illinois University (IL))

A Distant Affinity

» [Rachel Avshalumova](#) (Barry University (FL))

11 am

C-14—Original Prose: Reflections on Life

Ballpark 2 (1)

Chaired by: Katrina Paolicchi and Mary Clai Jones

The Waltz

» [Jackson Bulman](#) (Calhoun Community College (AL))

Lucky Strikes

» [Jason Van Wyk](#) (Calhoun Community College (AL))

Write Me

» [Piper Fitzgerald](#) (Saint Louis University (MO))

Lexicon

» [Fiona Haborak](#) (The University of Texas at Dallas (TX))

When We Burn

» [Mia Irving](#) (Luther College (IA))

Far from Venus: Prologue

» [Jessamin McSwain](#) (Stephens College (MO))

11 am

C-15—Gender Equality in Translation

Ballpark 3 (1)

Chaired by: Laura Von Wallmenich and Jordan Spector

Female Empowerment in the Old French Fabliaux

» [Grace Patterson](#) (Florida Atlantic University (FL))

Female Identities in Francophone Literature

» [Kaitlen Wood](#) (University of Southern Indiana (IN))

Gendered Dynamics in Euripides' Bacchae

» [Veronica Gomez](#) (The College of New Jersey (NJ))

The Lasting Relevance of A Doll's House

» [Natalie Turner](#) (Oklahoma City University (OK))

11 am

C-16—Race Talk in the Literature Classroom

Salon A-D (2)

Chaired by: Glen Brewster and Charlotte Beale and Gabrielle Hardoin

» [Sophia Sarigianides](#) (Westfield State University (MA))

11 am

C-17—Roundtable: Then the War: Limits of Language and Jesuit Values

Lindbergh (1)

Chaired by: Billie Tadros and Madeline Gangnes

Continued from **Thursday, 4 April**

Then the War: Limits of Language and Jesuit Values

» [Bethany Belkowski](#) (The University of Scranton (PA)), [Amelia Semple](#) (The University of Scranton (PA)), [Brenna Parker](#) (The University of Scranton (PA)), [Shannon Parker](#) (The University of Scranton (PA)), [Megan Zabrowski](#) (The University of Scranton (PA))

11 am **C-18—Roundtable: Are You Barbie's Mother? Literary Foremothers**

Gateway 2 (2)

Chaired by: Donna Decker

Are You Barbie's Mother? Literary Foremothers

» Donna Decker (Franklin Pierce University (NH)), [Rachel Strout](#) (Franklin Pierce University (NH)), [Jenna Parent](#) (Franklin Pierce University (NH)), [Abigail Rogers](#) (University of North Georgia, Gainesville (GA)), [Madelyn Frye](#) (Franklin Pierce University (NH))

11:30am **Chapter Displays**

Grand Foyer (2)

11:30am **Chapter Merchandise Sales**

Grand Foyer (2)

12:15pm **Lunch (on your own)**

12:30pm **Student Social Salon**

Manchester (4)

Chaired by: Irelyn Coker and DeAni Blake-Britton

1:45pm **D-01—Creative Nonfiction: Identity, Love, and the Divine**

Grand Suite 1 (2)

Chaired by: Cassandra Arencibia and Diane Dowdey

Confessions of an Adopted Child

» [Addison Smith](#) (Southern Utah University (UT))

In Loving Memory

» [Emma McKinley](#) (Muhlenberg College (PA))

Favorite Color

» [Zachary Brady](#) (Utah State University, Logan (UT))

Baptism by Immersion

» [Mallory Gardner](#) (California State University, Bakersfield (CA))

Impossibly Far and Impossibly Close

» [Gila Avshalumova](#) (Barry University (FL))

1:45pm **D-02—Original Poetry: Growing Up**

Grand Suite 2 (2)

Chaired by: Sonia Brown and Caleb Delos-Santos

Bound

» [Zoë Metelerkamp](#) (Brenau University (GA))

Homesick

» [Samantha Grunden](#) (Westfield State University (MA))

Adolescence

» [Grace Miller](#) (Palm Beach Atlantic University (FL))

Now, sweetheart, what do we say?

» [Jadyn Shaver](#) (Indiana University of Pennsylvania (PA))

The Musings of a Girl Far from Home

» [Naomi Meeks](#) (College of the Ozarks (MO))

1:45pm **D-03—Original Poetry: LGBTQIA+ Identities**

Grand Suite 3 (2)

Chaired by: Bleah Patterson and Kevin Stemmler

Continued from **Thursday, 4 April**

Mulatto Magic

» [Isabella Hardin](#) (University of Kentucky (KY))

trans [re]incarnation—[re]living this body's birth

» [Elias Kerr](#) (The University of Scranton (PA))

Who am I if not Them

» [Alexia Girard](#) (Southwestern Oklahoma State University (OK))

Antelope Boy: Gender and Human Identity

» [Jamison Conforto](#) (Southern Utah University (UT))

Turning the Soil

» [Will Grasso](#) (Chatham University (PA))

1:45pm

D-04—Original Poetry: Change and the Divine

Gateway 1 (2)

Chaired by: Patricia Tarantello and Catherine Davis

Grace with Fangs

» [Abigail Macher](#) (Westminster College (PA))

A Collection of Embers

» [Gabiella Amleto](#) (Marist College (NY))

Selections from Life Superfluous

» [Isabel Snyder](#) (Slippery Rock University (PA))

Pious Hormiga Mandibles—An Offering

» [David Gomez](#) (California State University, Fresno (CA))

Theia Mania

» [Lorah Murphy](#) (Marist College (NY))

1:45pm

D-05—Early Modern Explorations

Gateway 3 (2)

Chaired by: Kristy Cherry-Randle and Charlie Jones

Tonal Variety in Milton's Paradise Lost

» [Chloe Sanfacon](#) (Westfield State University (MA))

Knowledge and Commitment in Marlowe and Cavendish

» [Emily Palmisano](#) (University of Evansville (IN))

Companionship Amongst Nobility in Henry V

» [Cassandra Montgomery](#) (University of Alabama (AL))

Man or King: Henry V from His Battlefield Prayer

» [Autumn Carpenter](#) (University of Alabama (AL))

1:45pm

D-06—Gender Identity and Realism

Gateway 4 (2)

Chaired by: Chrysalis Gilmer and Glenn Steinberg

Magical Femininity in Apuleius's The Golden Ass

» [Melina Marin](#) (Washington University (MO))

Rejecting Realism: Liza in Notes From Underground

» [Rylee Schmidt](#) (Oklahoma Christian University (OK))

Matelda: A Feminist Deconstruction

» [Maggie Machado](#) (The College of New Jersey (NJ))

Identity in All Quiet on the Western Front

» [Elizabeth Clingan](#) (Fort Hays State University (KS))

1:45pm

D-07—Gender and Authenticity in Literary Text

Gateway 5 (2)

Chaired by: Judith Clark and Courtney Grable

The Changing Tides of Masculinity through Hallyu

» [Catherine Hom](#) (The College of New Jersey (NJ))

Continued from **Thursday, 4 April**

A Stepstone into Gender Equality

» [Kassie Price](#) (Arkansas Tech University (AR))

"Feminist" Tropes in Science Fiction Film

» [Pixie Merkley](#) (Southern Utah University (UT))

Gender and Media in the French Revolution

» [Migisha Eva Sangwa](#) (Oklahoma Christian University (OK))

1:45pm

D-08—Ethnicity, Culture, and Liberation

Salon E (2)

Chaired by: Stacey Kikendall and Dana Livelli

Aesthetics of Place: Pleasure in the South

» [Kaysyn Jones](#) (Florida State University (FL))

The Proletariat Boys

» [Rebecca Linhardt](#) (Olivet Nazarene University (IL))

Schisms in Yo

» [Allison Nagaraja](#) (Olivet Nazarene University (IL))

Tupac's Fight for Liberation

» [Michelle Cardwell](#) (Lindsey Wilson College (KY))

1:45pm

D-09—British Romanticism and the Search for Meaning

Salon F (2)

Chaired by: Julia Combs and Delaney Jones

Deconstruction of Power and Suffering in Shelley

» [Kalen Krantz](#) (University of Nebraska Kearney (NE))

Social Commentary in Wordsworth's "We Are Seven"

» [McKenna Love](#) (University of Southern Indiana (IN))

James Boswell's Desperate Search for Meaning

» [Madison Jukkola](#) (Mercyhurst University (PA))

An Ode to Shelley's Imagination and Reason

» [Hanna Wagers](#) (Lee University (TN))

1:45pm

D-10—Examining Queer Identities and Romance

Salon G (2)

Chaired by: Hillary Coenen and Elizabeth Attebery

The Rainbow Fish is Gay and Wealthy

» [Alexis Marburg](#) (Midwestern State University (TX))

Rainbow Boys Walked So Heartstopper Could Run

» [Claudia Masclans](#) (The College of New Jersey (NJ))

Transgender Protagonists in Middle-Grade Novels

» [Megan Finan](#) (The College of New Jersey (NJ))

Aristotle and Dante: Cheesy Queer Romance of Today

» [Taylor Beam](#) (Shepherd University (WV))

1:45pm

D-11—Exploring Trauma and Addiction

Market Street Room (1)

Chaired by: Emiliann Williams and David Elder

"Snap To": How Monstrumology Corrupted Will Henry

» [CJ Gibson](#) (Fort Hays State University (KS))

The Riddle of Shame and Selfhood in "Her Letters"

» [Harrison Jenkins](#) (Fort Hays State University (KS))

Nature Prevails over the Ignorance of Humans

» [Camrie Miranda](#) (Morningside University (IA))

Continued from **Thursday, 4 April**

1:45pm **D-12—Original Prose: Creative Response to Trauma and Mental Health**

Laclede (1)

Chaired by: Emma Fisher and Therese Holzapfel

The Dead Remember

» [Jack Fanning](#) (Liberty University (VA))

Covered

» [Jenna Ellis](#) (Western Michigan University (MI))

Black Taxi

» [Lynn Reutens](#) (University of Mount Union (OH))

Top of the World

» [Diego Uceda](#) (Randolph College (VA))

Drops of Remedy

» [Autumn McFadden](#) (Sul Ross State University (TX))

1:45pm **D-13—Original Prose: Trauma and Grief**

Ballpark 1 (1)

Chaired by: Charity Gibson and Emma Moore

A Tragic Art

» [Eliana Plumb](#) (College of the Ozarks (MO))

The Girl on 63rd Street

» [Rebecca Kachmar](#) (Hartwick College (NY))

The Hero's Fool

» [Joshua Kampe](#) (Friends University (KS))

A Doll Named Anna

» [Yakira Johnson](#) (North Dakota State University (ND))

A Red Couch

» [Shannon Parker](#) (The University of Scranton (PA))

1:45pm **D-14—Creative Poetry and Flash Fiction: Inspirations and Personal Musings**

Ballpark 2 (1)

Chaired by: Eli Burrell and Ezabelle Janssen

Smile and Pour

» [Cole Bernstein](#) (Washington University (MO))

The Coffee Incident

» [Jordan Rape](#) (University of Montevallo (AL))

The Devil Got My Sister

» [Toni Thompson-Morgan](#) (University of Montevallo (AL))

Obedere

» [Sarah Engle](#) (University of North Carolina at Charlotte (NC))

To Love and Be Loved

» [Rebecca Raush](#) (Rutgers University-New Brunswick (NJ))

Poesis

» [Sofia Escobar](#) (Hartwick College (NY))

Cuando Fuma La Montaña

» [Joselyn Mairena](#) (Hawai'i Pacific University (HI))

Cornered

» [Jaedyn Gronemeyer](#) (Chadron State College (NE))

1:45pm **D-15—Colonialism, Classism, and Folklore**

Ballpark 3 (1)

Chaired by: PrathimMaya Dora-Laskey and Josephine Mahlum

Race and Religion in the Spread of Colonialism

» [Matthew Yuro](#) (The College of New Jersey (NJ))

Continued from **Thursday, 4 April**

Language, Identity, and Colonization in Friel

» [Heather Kaatz](#) (Alma College (MI))

History and Classism in The God of Small Things

» [Lauren Farrell](#) (The College of New Jersey (NJ))

Totalitarianism, Passivity, and Magic

» [Cillian Deisner](#) (Saint Louis University (MO))

1:45pm **D-16—How to Talk to English Majors about Careers without Freaking Them Out: A Workshop for Faculty**

Salon A-D (2)

Chaired by: Felicia Steele

» Janine Utell (Modern Language Association)

1:45pm **D-17—Roundtable: Literature—A Gateway to Understanding Ourselves**

Lindbergh (1)

Chaired by: Matthew Brown

Literature—A Gateway to Understanding Ourselves

» [Jack Gahr](#) (Calhoun Community College (AL)), [Sundance Hollingsworth](#) (Aims Community College, Greeley Campus (CO)), [Mariah Crawford](#) (Aims Community College, Greeley Campus (CO)), [Jada Casey](#) (Northeast Alabama Community College (AL))

1:45pm **D-18—Designing Literature Curriculum for Antiracist Outcomes**

Gateway 2 (2)

Chaired by: Glen Brewster and Charlotte Beale and Gabrielle Hardoin

» Sophia Sarigianides (Westfield State University (MA))

2:30pm **Left Bank Books Pop-Up Store**

Grand Foyer (2)

3:15pm **E-01—Creative Nonfiction: Life and Love**

Grand Suite 1 (2)

Chaired by: Nicole Sheets and Brandon Goins

WE WERE HERE

» [Elisa Vigil](#) (Whitworth University (WA))

Bellyache

» [Gabriella Hirshfield](#) (Muhlenberg College (PA))

Down and ready, girls

» [Carrie Johnson](#) (Austin College (TX))

Future Versions

» [Jessica Baker](#) (Elon University (NC))

A Magical Moment on Aisle 13

» [Briana Cantrell](#) (University of North Georgia, Gainesville (GA))

3:15pm **E-02—Original Poetry: Transformation and Change**

Grand Suite 2 (2)

Chaired by: Corbett Upton and Fiona Haborak

Caringly Transformative

» [Kelsey James](#) (The University of Iowa (IA))

Plant Based Poetry

» [Ethan Kober](#) (Luther College (IA))

Change of Mind and Other Transformations

» [Sara Rabinowitz](#) (Marist College (NY))

This Body is a Carving

» [Keely Viator](#) (Lamar University (TX))

Continued from **Thursday, 4 April**

When Things Change

» [Savannah Barker](#) (Louisiana Tech University (LA))

3:15pm **E-03—Original Poetry: Identity, Equality, and Response to Trauma**

Grand Suite 3 (2)

Chaired by: Grace Mackey and Amy Gates

Humanisms

» [Ren Parks](#) (Illinois College (IL))

Trauma Follows Better than Buses Follow Schedules

» [Ashe Cendere](#) (Florida State University (FL))

How Old the Knife, How Learned the Palm

» [Mollie McMullan](#) (SUNY, College at Geneseo (NY))

A Woman in the World

» [Isabel Stollsteimer](#) (Western Colorado University (CO))

Signed, Yours

» [Elizabeth Plummer](#) (Mercyhurst University (PA))

3:15pm **E-04—Common Reader: Romance, Love, and War**

Gateway 1 (2)

Chaired by: Billie Tadros and Gracen Wrenn

Watch a Silence, Mirror of "Sing a Darkness"

» [Elijah Wilhelm](#) (Park University (MO))

Power and Vulnerability in Phillips' "Electric"

» [Bethany Belkowski](#) (The University of Scranton (PA))

The Gods Must Rest

» [Miranda Miller](#) (The University of Iowa (IA))

After

» [Kelly Taylor](#) (Chapman University (CA))

3:15pm **E-05—Examining Body Image, Culture, and Sexuality**

Gateway 3 (2)

Chaired by: Sondra Bickham Washinton and Greta Soos

Ocean Vuong and the Dilemma of Space

» [Mac Chamberlain](#) (Lipscomb University (TN))

Sandra Cisneros' "Down There" as Menstrual Activism

» [Gideon Hatt](#) (Cottey College (MO))

Cleopatra: The Bane of Rome and Gender Norms

» [Savanna Romero](#) (Utah Tech University (UT))

"Reluctant Amorous Delay": Sex in Paradise Lost

» [Madeline Marriott](#) (Lafayette College (PA))

3:15pm **E-06—Exploring Trauma in World Literature**

Gateway 4 (2)

Chaired by: Jim Watkins and Hailey Watt

Voicelessness and Sexual Violence in Cliff's Abeng

» [Jeremiah Handlon](#) (North Carolina Wesleyan College (NC))

An Exploration of Trauma in Room by Emma Donoghue

» [Jorgi Anderson](#) (University of Arkansas - Fort Smith (AR))

The Consequences of Illusions

» [Ann-Marie Thomas](#) (Olivet Nazarene University (IL))

Staying Is Better than Leaving?

» [Tomas Pena](#) (University of Oregon (OR))

3:15pm **E-07—Original Poetry: Lyrics and Love**

Gateway 5 (2)

Chaired by: Anne Rashid and Hallie Calvin

Continued from **Thursday, 4 April**

Eating Poems from the Garden

» [Keegan Flanagan](#) (Carlow University (PA))

Love Changing

» [Claire Stevens](#) (Carlow University (PA))

Pink is the Most Expensive Color

» [Grace Fette](#) (Indiana University of Pennsylvania (PA))

It's Always a Freefall

» [Hannah Pfeifly](#) (Chadron State College (NE))

Of the Family

» [Lillian Durr](#) (Missouri State University (MO))

3:15pm **E-08—Indigenous Storytelling and Narrative**

Salon E (2)

Chaired by: Glenn Steinberg and Hanna Denton

Navajo Language: Rebirth in Poetry

» [Jaxon Tueller](#) (Utah Tech University (UT))

Time, Water, and Trauma in Silko's Ceremony

» [Victoria Kerins](#) (The College of New Jersey (NJ))

Correction: More Narratives Don't Rewrite History

» [Kamyllie Gutierrez](#) (Santa Clara University (CA))

Double Consciousness in "The Soft-Hearted Sioux"

» [Shayne Nielson](#) (Utah Tech University (UT))

3:15pm **E-09—The Reading of Monsters**

Salon F (2)

Chaired by: Macklin Cowart and Hannah Klepsky

Frankenstein Read through an Autistic Lens

» [Isabel Garrison](#) (Austin College (TX))

Frankenstein: Upturning Heteronormative Binaries

» [Charlie Barefield](#) (Westminster College (PA))

Tabula Rasa and Frankenstein's Monster

» [Dakota Mecham](#) (Utah State University Statewide (UT))

How Society Makes Monsters

» [Isabel Lindsay](#) (The College of New Jersey (NJ))

3:15pm **E-10—Voice, Agency, and Advocacy**

Salon G (2)

Chaired by: Linda Miller and Hannah Sanchez

Contemporary Discourse Surrounding Banned Books

» [Taylor Castelot](#) (Coastal Carolina University (SC))

Tackling the Hard Shell of Weight Loss Narratives

» [Cheyenne Hennesay](#) (University of Texas at Arlington (TX))

The True Meaning of Agency

» [Jaxon Leifer](#) (The College of New Jersey (NJ))

Children's Literature as a Medium for Change

» [Leah Ayers](#) (Fort Hays State University (KS))

3:15pm **E-11—Release, Revolution, and Change**

Market Street Room (1)

Chaired by: Ted Mathys and Hannah Wolfe

Catharsis by Storytelling in Breakfast of Champions

» [Victoria Nesmelova](#) (Westfield State University (MA))

Trapped in Transition: O'Connor's Religious Liminality

» [Jonas Essington](#) (Palm Beach Atlantic University (FL))

Continued from **Thursday, 4 April**

New Vanguard: Lorde, Marxism & Revolutionary Care

» [John Hollihan](#) (University of Pittsburgh (PA))

COVID-19 Poetry and Social Crisis

» [Avery Sutherland](#) (Elon University (NC))

3:15pm

E-12—Original Prose: Addiction and Alienation

Laclede (1)

Chaired by: Kriss Larkin and Sophia Sullivan

Too Much of Good Things

» [Madison Daniels](#) (Randolph College (VA))

My Dust Shall Wash away with the Water

» [Autumn Mills](#) (Chadron State College (NE))

Talking to You First

» [Therese Shimkus](#) (The University of Scranton (PA))

The Waters

» [Emma Visker](#) (Lipscomb University (TN))

Rainbow Sherbet Ice Cream

» [Jordan Delage](#) (Hartwick College (NY))

3:15pm

E-13—Original Prose: Realism, Folklore, and Deception

Ballpark 1 (1)

Chaired by: Kristy Cherry-Randle and Jenae Jordan

Over Yonder

» [Maria Connour](#) (Ohio Northern University (OH))

The Process of Ensnarement

» [Daryn Schwimmer](#) (Chapman University (CA))

Sweet Bitterness

» [Sadie Vander Wey](#) (Chadron State College (NE))

Seven Nights at the Sinclairs'

» [Mikaela Rosenthal](#) (Thomas More University (KY))

Railroad Cat

» [Maureen Edwards](#) (University of Alabama (AL))

3:15pm

E-14—British Drama and Gender Equality

Ballpark 2 (1)

Chaired by: Alan Rauch and Brett Moran

The Merchant of Venice: Portia and Protofeminism

» [Madison McLaughlin](#) (Eastern Illinois University (IL))

Desdemona and Lady Macbeth's Sexed Downfalls

» [Nikhita Panjani](#) (Santa Clara University (CA))

Power and Femininity in Titus Andronicus

» [Ashley Kluting](#) (Northern Michigan University (MI))

The Defiance of a Mother

» [Molly Morby](#) (Utah Tech University (UT))

3:15pm

E-15—Original Prose: Exploring Adolescence

Ballpark 3 (1)

Chaired by: Patricia Harkins-Pierre and Isabel Rinaldi

Song in a Birdcage

» [August Boland](#) (Marist College (NY))

Troop 382

» [Sarah Destin](#) (Florida State University (FL))

Under the Crab Apple Tree

» [Sarah McLaughlin](#) (Providence College (RI))

Continued from **Thursday, 4 April**

A Star's Warmth

» [Ashley Burrows](#) (Chadron State College (NE))

August's Magic Drawing

» [Elizabeth Attebery](#) (Southern Arkansas University (AR))

3:15pm **E-16—What Can You Do With an English Major? A Workshop on Mapping Career Pathways for Students**

Salon A-D (2)

Chaired by: Felicia Steele and Kaitlynn Sass

» Janine Utell (Modern Language Association)

3:15pm **E-17—Roundtable: Equitable Approaches to Teaching English**

Lindbergh (1)

Chaired by: Ellen Foster

Equitable Approaches to Teaching English

» [Faith Smith](#) (PennWest Clarion (PA)), [Lydia Dixon](#) (PennWest Clarion (PA)), [Alexy McDermid](#) (PennWest Clarion (PA)), [Lauren Reddinger](#) (PennWest Clarion (PA))

3:15pm **E-18—Roundtable: Transitioning Narratives from West to East**

Gateway 2 (2)

Chaired by: Carie King

Transitioning Narratives from West to East

» [Swati Anweshā](#) (The University of Texas at Dallas (TX)), [Nikita D'Monte](#) (The University of Texas at Dallas (TX)), [Akīe Kasāi](#) (The University of Texas at Dallas (TX))

4:45pm **F-03—Alumni Mixer**

Lindbergh (1)

Chaired by: Kaitlynn Sass

4:45pm **F-01—Chapter Share Tables**

Arch View Foyer (2)

4:45pm **F-02—Research in the Round**

Arch View Ballroom (2)

Chaired by: Shannin Schroeder and Leigh Dillard and Eunice Tan and Katherine Berube and Destiny Jones

6pm **SKD Meet & Greet**

Meet in Hotel Lobby (1)

6pm **Dinner (on your own)**

6:15pm **Student Social Salon**

Manchester (4)

Chaired by: Ja'Vontaye Gagum and Rachel Harvey

7:30pm **Keynote Author: Maryfrances Wagner**

Salon A-D (2)

Chaired by: Carie King and Eunice Tan

» Maryfrances Wagner (Missouri Poet Laureate)

8:30pm **Maryfrances Wagner Book Signing**

Walnut Foyer (2)

Chaired by: Kaitlynn Sass and Katherine Berube and Kelly Taylor and Destiny Jones and Gabrielle Hardoin

Continued from **Thursday, 4 April**

9pm **Bad Poetry**
Salon A-D (2)
Chaired by: DeAni Blake-Britton and Eunice Tan and Charlotte Beale and Zoe Talbot and Kaitlynn Sass

Friday, 5 April

7:30am **Registration**
Broadway Foyer (1)

8am **Shop English Pop-Up Store**
Broadway 2 (1)

8am **Chapter Merchandise Sales**
Grand Foyer (2)

8am **G-01—Creative Nonfiction and Childhood**
Grand Suite 1 (2)
Chaired by: Yaisa Mann and Katelynn Adrian

The Longest Night

» [Abigail Dunford](#) (Lesley University (MA))

Buried Past

» [Destiny Jones](#) (Southern Arkansas University (AR))

Conditioned

» [Josh Nichols](#) (Arkansas Tech University (AR))

Schools like This

» [Aaliyah Blackett](#) (Lesley University (MA))

8am **G-02—Creative Nonfiction: Life, Legends, and Loss**
Grand Suite 2 (2)
Chaired by: Bradley Fest and Satyne Doner

Shadows of the Shanghai Tunnels

» [Ally McAfee](#) (Whitworth University (WA))

Honoring My Own No Name Woman

» [Carmen Lok](#) (Southern Arkansas University (AR))

The Day After Easter

» [Melinda Mullet](#) (Whitworth University (WA))

A Path Paved by Tears

» [Sabrina Bunting](#) (Eastern Illinois University (IL))

The Scientific Method

» [Rebeka Scheiderer](#) (Chadron State College (NE))

8am **G-03—Creative Poetry: History, Reality, and Imagination**
Grand Suite 3 (2)
Chaired by: Shompaballi Datta and Katie Piper

Water Lillies in Monmouth

» [Haley Hansen](#) (Coastal Carolina University (SC))

Funhouse Mirrors

» [Curry Teems](#) (Berry College (GA))

Viking Bark

» [Rica Lelina](#) (The University of Texas at Dallas (TX))

A World In Flux

» [Aaron Scott](#) (Randolph College (VA))

Selfish Wish

» [Samantha Miller](#) (SUNY, College at Geneseo (NY))

Continued from **Friday, 5 April**

8am **G-04—Original Poetry: Travel, Time, and Truth**
Gateway 1 (2)
Chaired by: Tyler Bell and Matt Hlinak

My Skeleton Made of Wood
» [Amanda Parrack](#) (Missouri State University (MO))

Healing Psalms
» [faith otey](#) (Carlow University (PA))

Mapping Lives
» [Faith Goin](#) (Olivet Nazarene University (IL))

8am **G-05—American Values**
Gateway 3 (2)
Chaired by: Tracy Floreani and Kelly Taylor

A Double Letter to a Connecticut Soldier
» [Ella Campopiano](#) (Trinity College (CT))

Franklin Evans or the Inebriate
» [Carly Gillis](#) (Furman University (SC))

American Ambition: Virtue or Vice?
» [Owen Kowalewski](#) (Furman University (SC))

Suffering Saints in Uncle Tom's Cabin
» [Sarah Burger](#) (Saint Vincent College (PA))

8am **G-06—Original Poetry: In Flux and Change**
Gateway 4 (2)
Chaired by: Diane Dowdey and Kris Carpenter

The Influencers Are Gaslighting Us
» [Bleah Patterson](#) (Sam Houston State University (TX))

The Nomenclature of Shapes
» [Maria Cangro](#) (Lafayette College (PA))

Yellow & Company: An Exhibit of Poetry
» [McKenna Oakley](#) (Florida State University (FL))

Echoes of the Old House
» [Olivia Wright](#) (Wayne State College (NE))

When Will You Water Me?
» [Caleb Delos-Santos](#) (Southern Illinois University Edwardsville (IL))

Parable of the Leaving
» [Marley Ramon](#) (Mercyhurst University (PA))

8am **G-07—Monsters, Meditations, and Manipulators**
Gateway 5 (2)
Chaired by: Margaret Oakes and Ashton Thomas

A Beautiful Corpse: Cultural Anxiety in Dracula
» [Taylor Vredenburg](#) (Fort Hays State University (KS))

Mobility as Modernity in Dracula
» [Isaiah Russell](#) (Fort Hays State University (KS))

Monstrosity and Manners in the 19th Century
» [Catherine Davis](#) (Furman University (SC))

Illustrations in “The Lenton Croft Robberies”
» [Maille Allardyce](#) (The University of Scranton (PA))

Lockwood: The Unreliable Narrator
» [Mary Kanipes](#) (Tennessee Wesleyan University (TN))

8am **G-08—Queer, Cultural, and Feminist Theories**
Salon E (2)
Chaired by: Diane Steinberg and Lojan Shaker

Continued from **Friday, 5 April**

A Poet's Definition of Love

» [Zoe O'Malley](#) (The College of New Jersey (NJ))

Reconstruction and Reimagining: An Analysis of Retroactive Interpretations of HIV/AIDS in Film in 120 BPM and Rent

» [Reagan Kimzey](#) (Macalester College (MN))

Communal Escape into Fantastical Bliss

» [Matthew Moon](#) (University of North Georgia, Gainesville (GA))

The Phantom of the Opera: A Fight for Power

» [Abigail Morelock](#) (Lipscomb University (TN))

8am

G-09—Women in Multicultural American Literature

Salon F (2)

Chaired by: Madison Mozak and Christopher Chandler

Beauty in the Madness: Septimus and Pecola

» [Dana Livelli](#) (Ramapo College of New Jersey (NJ))

The Balance of Motherhood

» [Amy Reznik](#) (The College of New Jersey (NJ))

A Deliberate Blind Eye in Devil in a Blue Dress

» [Julianna Reidell](#) (Arcadia University (PA))

A Paradox in Beliefs

» [Eleonora Newell](#) (University of Alabama (AL))

8am

G-10—Portraits of Women

Salon G (2)

Chaired by: Jill Anderson and Mallory Gardner

Deconstructing the Brave New World of Feminism

» [Kaisha Girard](#) (Southern New Hampshire University - Online (NH))

A Portrait of the Prostitute as Woman

» [Anna Fischer](#) (University of Pittsburgh (PA))

Implications of the Womanly Image

» [Julianna Browning](#) (Ohio Northern University (OH))

Femininity and Gender in James Joyce's Ulysses

» [Grace Malinowski](#) (Palm Beach Atlantic University (FL))

8am

G-11—Space and Alienation in American Literature

Market Street Room (1)

Chaired by: Adam Stier and Peyton Bortner

Cather, Connection, and Modernism

» [Preston Waddoups](#) (Utah State University, Logan (UT))

The Trauma of Femininity in Stephen King's Carrie

» [Hannah Klepsky](#) (Chatham University (PA))

Space, Time, and Speech in Kindred

» [Jaclyn Romano](#) (The College of New Jersey (NJ))

Janie's Rejection of Conventionality

» [Jake Hamtil](#) (The College of New Jersey (NJ))

8am

G-12—Original Prose: Transformation and Life

Laclede (1)

Chaired by: Gloria Hochstein and Maria Connour

Damned if I Die

» [Isabella Edwards](#) (Eastern Illinois University (IL))

Ash of The Phoenix

» [Kaytlen Bishop](#) (Texas Tech University (TX))

Caroline's Garden

» [Allison Harmon](#) (Lamar University (TX))

Continued from **Friday, 5 April**

Anna (for Kameela Brown)

» [Robert Brown](#) (Rockhurst University (MO))

The Lighthouse

» [Mariona Bolao Manén](#) (Missouri Valley College (MO))

8am

G-13—Original Prose: Relationships and Thresholds

Ballpark 1 (1)

Chaired by: Patricia Tarantello and Marianne Prax

Killing Boys

» [Nyaysia Robinson](#) (Florida State University (FL))

All's Fair When Love Is War: Chapter One Excerpt

» [Katherine Anne Thierfelder](#) (Union University (TN))

Mouthwash Hero

» [Kyle Esoian](#) (Marist College (NY))

Vignettes: Tomb Tile 1st-2nd Century BCE

» [Mathis Edwards](#) (St. Catherine University (MN))

The Stilt House

» [Kennedy Stepongzi](#) (Florida State University (FL))

8am

G-14—Short Fiction: Family and the Natural World

Ballpark 2 (1)

Chaired by: Kassie Price and Therese Holzapfel

Trap of the Blossom: Chapter 1

» [Eunice Tan](#) (Union University (TN))

Beneath Your Skin

» [Michael Keyes](#) (University of Southern Mississippi Gulf Coast (MS))

Tension: A Short Story

» [Monica Wanyiri](#) (Rockhurst University (MO))

41 Floors between My Life and God

» [Jonathan Kirk](#) (Saint Francis University (PA))

The Storm

» [Jenae Jordan](#) (Southern New Hampshire University - Online (NH))

8am

SKD Advisor Meeting

Ballpark 3 (1)

8am

G-15—Roundtable: Agatha Christie: Queen of Crime and Adaptions

Salon A-D (2)

Chaired by: Ami Comeford

Agatha Christie: Queen of Crime and Adaptions

» [Briley Wyckoff](#) (Utah Tech University (UT)), [Shayne Nielsen](#) (Utah Tech University (UT)), [Charlotte Beale](#) (Utah Tech University (UT))

8am

G-16—Roundtable: Humanizing AI

Lindbergh (1)

Chaired by: Kel Sassi

Humanizing AI

» [Madison Knipp](#) (Northern Michigan University (MI)), [Alexandria Bournonville](#) (Northern Michigan University (MI)), [Marisa Frisk](#) (Northern Michigan University (MI)), [Erin O'Donnell](#) (Northern Michigan University (MI)), [Sarah Makinen](#) (Northern Michigan University (MI))

8am

G-17—Roundtable: New Jersey Literature in Flux? Fuggedaboutit!

Gateway 2 (2)

Chaired by: Jayanti Tamm

Continued from **Friday, 5 April**

New Jersey Literature in Flux? Fuggedaboutit!

» Jayanti Tamm (Ocean County College (NJ)), [David Bordelon](#) (Ocean County College (NJ)), [Zoe Talbot](#) (The College of New Jersey (NJ)), [Kristen Daly](#) (The College of New Jersey (NJ))

9am **Chapter Displays**
Grand Foyer (2)

9:30am **H-01—Creative Nonfiction: Grief as Life Goes On**
Grand Suite 1 (2)
Chaired by: Billie Tadros and Matthew Chinique

The Aegean Sea

» [Madeline Riske](#) (The University of Iowa (IA))

Metaphor and Remembrance: September 11, 2001

» [Faith Montagnino](#) (The University of Scranton (PA))

I Tell Myself Stories

» [Emiliann Williams](#) (University of North Carolina at Charlotte (NC))

Switching Lanes

» [Breanna Cotner](#) (Midwestern State University (TX))

The Letters I Didn't Burn

» [Charlie Jones](#) (Southern Utah University (UT))

9:30am **H-02—Creative Nonfiction: LGBTQIA+ and Personal Narratives**
Grand Suite 2 (2)
Chaired by: Melina Marin and David Elder

Checkmate

» [Lauren Trowbridge](#) (St. Catherine University (MN))

God, Oaths, and the Secret Third Thing

» [Julia Hogan](#) (Saint Vincent College (PA))

Gender and Other Sh*t

» [Theodore Czepiel](#) (Lincoln Memorial University (TN))

Conversations in the Car with my Mom

» [Jordan Kwarcinski](#) (Morningside University (IA))

9:30am **H-03—Creative Nonfiction: Self Discovery in Poetry Workshops**
Grand Suite 3 (2)
Chaired by: Sherri Craig and Ashton Thomas

Every Life a Song of Sorrow

» [Paris Woodward-Ganz](#) (University of Oregon (OR))

Suburban Dysfunction: A Poetry Collection

» [Annabelle Chipps](#) (Slippery Rock University (PA))

Where's My Soul?: Interactive Book 4 Stunted Women

» [Cassandra Arencibia](#) (Marist College (NY))

Maternal Missouri

» [Maya Dally](#) (Missouri Southern State University (MO))

Harmony of Life

» [Brooke Millard](#) (Marist College (NY))

In and Out of LA

» [Catherine Silva](#) (Chapman University (CA))

9:30am **H-04—Authenticity, Attitudes, and Silence**
Gateway 1 (2)
Chaired by: Elizabeth Covington and Migisha Eva Sangwa

The Ignorant Transcendentalist

» [Grace Mackey](#) (Palm Beach Atlantic University (FL))

Continued from **Friday, 5 April**

Silence Soars: Jewett's Anti-Industrialist Passion

» [Corinne Voelker](#) (Mercyhurst University (PA))

Public Animals: Anthropomorphism in Dickinson

» [Jessica Bartel](#) (Trinity College (CT))

The White Whale versus the White Man

» [Jessica Thomas](#) (Thomas More University (KY))

9:30am **H-05—Social Media, Justice, and Linguistics**

Gateway 3 (2)

Chaired by: Darlene Johnston and Mikaela Rosenthal

Linguistic Justice Pedagogy in ELA Classrooms

» [Madison Mills](#) (Eastern Illinois University (IL))

Lost in Translation: Impact of Linguistic Racism

» [Kara Stogsdill](#) (Illinois State University (IL))

The Urgency of Inclusive Curricula in Education

» [Madisyn Bishop](#) (Utah Tech University (UT))

How Filter Bubbles Hinder Social Media Users

» [Kristen Daly](#) (The College of New Jersey (NJ))

The Usage-Based Approach to Teaching English

» [Tiffany Nolde](#) (Texas A&M University, Commerce (TX))

9:30am **H-06—Time, Monsters, and Divine Comedy**

Gateway 4 (2)

Chaired by: Laura Von Wallmenich and Naomi Meeks

From Sequential to Circular Time in J. L. Borges

» [Gwen Niekamp](#) (Florida State University (FL))

The Legacy of Monstrous Women

» [Kathryn Jorgensen](#) (The College of New Jersey (NJ))

Monsters in Literature: How They Have Changed

» [Gracen Wrenn](#) (University of North Georgia, Gainesville (GA))

Contentment with the Guide in Divine Comedy

» [Michaela Plumb](#) (College of the Ozarks (MO))

9:30am **H-07—Communion, Symbols, and Faith in the Divine**

Gateway 5 (2)

Chaired by: Natalie Turner and Lexey Bartlett

Diverting Dining: Wilde's Earnest Food Symbolism

» [Makayla Banton](#) (University of Mary Hardin-Baylor (TX))

Unconventional Form for Atypical Spirituality

» [Ruth Clements](#) (Arkansas Tech University (AR))

How Darwin Challenged Christians

» [Courtney Luke](#) (Louisiana Tech University (LA))

Selving, Real Presence, and Incarnation in Hopkins

» [Sara Freund](#) (University of Dallas (TX))

9:30am **H-08—Race and Flux in Narratives**

Salon E (2)

Chaired by: Jim Watkins and Shelby Roth

Animalization amid Emancipations in A Mercy

» [Lauren Tragale](#) (The College of New Jersey (NJ))

How Primarily White Institutions Support False Narratives

» [Riley Weaver](#) (SUNY, College at Geneseo (NY))

Boundary (De)Construction in "Ambiguity Machines"

» [Lindsay Norton](#) (California State University, Fresno (CA))

Continued from **Friday, 5 April**

9:30am **H-09—Semantics, Terminology, and Analysis of Language**
Salon F (2)
Chaired by: Kriss Larkin and Sierra Slaugh

Linguistic Analysis of Victorian Medical Journals

» [Meghan Quaglino](#) (Northwestern State University of Louisiana (LA))

Is Estrangement from Nature Changing English?

» [Kenna Ownbey](#) (University of Texas at Arlington (TX))

Russia's Long War against Ukraine's Language

» [Katherine Shell](#) (Lipscomb University (TN))

Left Hand of Darkness: Language Failing Androgyny

» [Emily Ambery](#) (Duquesne University (PA))

Analysis on the Grammar of a Baseball Play-by-Play

» [Valerie Feldker](#) (Western Kentucky University (KY))

9:30am **H-10—Gender, Identity, and "Negative Theology"**
Salon G (2)
Chaired by: Pixie Merkley and Jayne Higgins

Queering Mrs. Ramsay: Woolf's To The Lighthouse

» [Rhyan Warmerdam](#) (Chapman University (CA))

J. Alfred Prufrock and Michelangelo

» [Abigail Murrill](#) (Lee University (TN))

A Homosocial Discourse in To the Lighthouse

» [Andrew Dampier](#) (Louisiana Tech University (LA))

Negative Theology and The End of the Affair

» [Ashlynn Perry](#) (Lipscomb University (TN))

9:30am **H-11—Haiku Workshop with Maryfrances Wagner**
Market Street Room (1)
Chaired by: Carie King and Autumn Koors-Foltz and Rachel Harvey

» Maryfrances Wagner (Missouri Poet Laureate)

9:30am **H-12—Original Prose: Relationships in Constant Flux**
Laclede (1)
Chaired by: Kevin Stemmler and Rebecca Raush

All That's Left

» [Paige Mathieu](#) (Lafayette College (PA))

Taking Care of It

» [Jessica Marinaro](#) (SUNY, College at Geneseo (NY))

The Standstill

» [Rowen Slepian](#) (University of Pittsburgh (PA))

Screaming, Suicidality, and Cilantro

» [Aimee Olson](#) (Utah State University, Logan (UT))

Like The Movies

» [Madelyn Frye](#) (Franklin Pierce University (NH))

9:30am **H-13—Flash, Fiction, and Flux**
Ballpark 1 (1)
Chaired by: Ellen Foster and Rihi Jain

Black Tie: A Ten-Minute Play

» [Cara Bond](#) (St. Mary's College of Maryland (MD))

The Day I Turned Invisible

» [Kaitlynn Sass](#) (Indiana University of Pennsylvania (PA))

Collection: Mythological Truths

» [Kelli Tucker](#) (Stephen F. Austin State University (TX))

Continued from **Friday, 5 April**

I Don't Care If It Wasn't Right

» [Josephine Mahlum](#) (St. Norbert College (WI))

Don't Look At The Moon

» [Kourie Edwards](#) (Park University (MO))

9:30am **H-14—Original Prose: Identity, Satire, and the Apocalyptic
Ballpark 2 (1)**

Chaired by: Zachary Brady and William C. Johnson

The Experiment: An Apocalyptic Story

» [Sophia Braun](#) (Ohio Northern University (OH))

By the Sweat of Your Brow

» [Valerie Eulett](#) (Saint Leo University (FL))

Terms and Conditions

» [Leslie Canterbury](#) (Indiana University of Pennsylvania (PA))

The Dixie Asian Market

» [Uriah Greer](#) (Northeastern State University (OK))

The Treehouse above the Woods

» [Amelia Semple](#) (The University of Scranton (PA))

9:30am **H-15—Creative Fiction: Hard Experiences, Musings, and
Therapeutic Writing**

Ballpark 3 (1)

Chaired by: Yu-Li Shen and Taylor Galavotti

Dominion

» [Carolina Atkins](#) (Palm Beach Atlantic University (FL))

Little Finch

» [Emily McKenna](#) (Missouri State University (MO))

The Magic of Nature

» [Sophia Mubarak](#) (American University of Kuwait (International))

Human Fish

» [Vontrice Lemell](#) (Southern New Hampshire University - Online (NH))

9:30am **H-16—Roundtable: Ink and Melodies: The Convergence of
Literature and Music**

Salon A-D (2)

Ink and Melodies: The Convergence of Literature and Music

» [Briana Cantrell](#) (University of North Georgia, Gainesville (GA)),
[Lauren Bachman](#) (University of North Georgia, Gainesville (GA)),
[Sophia Lockell](#) (University of North Georgia, Gainesville (GA)),
[Emrick Williams](#) (University of North Georgia, Gainesville (GA))

9:30am **H-17—Conversation with Carl Phillips**

Lindbergh (1)

Chaired by: Glen Brewster and Ja'Vontaye Gagum and DeAni Blake-Britton

» Carl Phillips (Washington University (MO))

9:30am **H-18—Roundtable: Maintaining an Innovative Chapter**

Gateway 2 (2)

Chaired by: Donna Newsome

Maintaining an Innovative Chapter

» [Mary Field](#) (Arkansas State University - Mid-South (AK)), [Ashok Karra](#) (Odessa College (TX)), [Brendan Egan](#) (Midland College (TX)),
[Serena Richards](#) (Collin College (TX))

11am **General Business Meeting & Regional Caucuses**

Salon A-D (2)

11am **SKD Linda Kraeger Awards Luncheon**

Meet in Hotel Lobby (1)

Continued from **Friday, 5 April**

- 12:15pm **Southern Region Caucus**
Gateway 1 (2)
- 12:15pm **Far Western Region Caucus**
Salon E (2)
- 12:15pm **High Plains Region Caucus**
Salon F (2)
- 12:15pm **Southwestern Region Caucus**
Salon G (2)
- 12:15pm **Eastern Region Caucus**
Salon A-D (2)
- 12:15pm **Midwestern Region Caucus**
Gateway 2 (2)
- 12:45pm **Lunch (on your own)**
- 1pm **Student Social Salon**
Manchester (4)
Chaired by: Zoe Talbot and Eunice Tan
- 2pm **Left Bank Books Pop-Up Store**
Grand Foyer (2)
- 2:15pm **I-01—Creative Nonfiction: Personal Narratives and Mental Health**
Grand Suite 1 (2)
Chaired by: Yu-Li Shen and Ryan Pulaski

Let's Play Pretend

» [Nicole Tahmoosh](#) (Muhlenberg College (PA))

Parts and Pretending

» [Alexia McCullison](#) (Washington University (MO))

A Dance of War and Peace

» [Hallie Calvin](#) (Southwestern Oklahoma State University (OK))

The Airplane Rule

» [Brenna Parker](#) (The University of Scranton (PA))

2:15pm **I-02—Creative Nonfiction: Journeys and Narratives in Gender**

Grand Suite 2 (2)

Chaired by: Kel Sassi and Sa'Nya Polo

How to Be a Man

» [William Stowell](#) (University of New Haven (CT))

Demeter & Daughter

» [Erin O'Donnell](#) (Northern Michigan University (MI))

God Is a Meth Addict

» [Julianne Kendrick](#) (High Point University (NC))

Stained Glass

» [Emma Moore](#) (Whitworth University (WA))

Climbing

» [Dimitri Bartels-Bray](#) (The University of Scranton (PA))

2:15pm **I-03—Original Poetry: In Society, In Self, In Flux**

Grand Suite 3 (2)

Chaired by: Emad Mirmotahari and Sofia Escobar

Things That Sit Inside Me: A Poetry Collection

» [Rachel Finney](#) (Westfield State University (MA))

Yourselves and All Things You Have

» [Mairin Landis](#) (Duquesne University (PA))

Continued from **Friday, 5 April**

Crisis Is

» [Olivia Knoedler](#) (Southern Illinois University Edwardsville (IL))

Head in the Clouds: Metamorphic Days & Nights

» [Sara Reed Wilson](#) (Brenau University (GA))

Just Making Things Up: A Collection of Poems

» [Hannah Wolfe](#) (Southeast Missouri State University (MO))

2:15pm

I-04—Alternative Views and Travel Narratives

Gateway 1 (2)

Chaired by: Elizabeth Ruleman and Brett Moran

"Raptus" in Flux: Rethinking Chaucer's Justice

» [Caroline Peacore](#) (St. Olaf College (MN))

Three Cheers for Miller's Tale: Chaucer as Alt Art

» [William Saccavino](#) (University of North Georgia, Gainesville (GA))

Parallels Between Travel Narratives and Much Ado About Nothing

» [Sarah Lognion](#) (McNeese State University (LA))

Courtly Love in Yonec: The Blessed and the Damned

» [Mackenzie Simpson](#) (Arkansas Tech University (AR))

2:15pm

I-05—Reality and Power in Shakespeare

Gateway 3 (2)

Chaired by: Judith Clark and Stephen Turner

Identity and Selfhood in The Comedy of Errors

» [Abigail Budine](#) (College of the Ozarks (MO))

Shakespeare's Richard II and Kingly Power

» [Charlotte Beale](#) (Utah Tech University (UT))

Metatheatre and Fantasy in The Winter's Tale

» [Mary-Catherine Berger](#) (University of North Carolina at Charlotte (NC))

Power in The Tempest: Reflecting Marxist Ideals

» [Eleni Theocharopoulou](#) (The College of New Jersey (NJ))

2:15pm

I-06—Death, Desire, and Self-Indulgence

Gateway 4 (2)

Chaired by: Macklin Cowart and Thomas Green

Exhumation of Firdaus and Relationship to Trauma

» [Chloe Whittington](#) (University of Central Oklahoma (OK))

The Reader's Desire in My Name Is Red

» [Aoibhinn O'Shea](#) (University of Oregon (OR))

"What happened to the two missing feathers?"

» [Keith Magnuson](#) (Grand Valley State University (MI))

The Cost of Egocentricity in Pere Goriot

» [Briley Wyckoff](#) (Utah Tech University (UT))

2:15pm

I-07—Women and Feminism in the 19th Century

Gateway 5 (2)

Chaired by: Camille Alexander and Claire Wittlieff

Self-Worth and Wealth: Rosamond in Middlemarch

» [Ashley Imdieke](#) (Luther College (IA))

Feminist Themes in Hawthorne's "The Birthmark"

» [Katie LaCoco](#) (Kennesaw State University (GA))

The British Colonization of Antoinette Cosway

» [Isabella Felton](#) (Oklahoma City University (OK))

Prince Charming, Prince Patriarchy

» [Abby Eaton](#) (Olivet Nazarene University (IL))

Continued from **Friday, 5 April**

2:15pm **I-08—Identity and the Authentic Self**
Salon E (2)
Chaired by: Charity Gibson and Toni Thompson-Morgan

Naming, Identity, and Dehumanization in Emperor
» [Kimberly Kindt](#) (Southern Utah University (UT))

Hurston's Dynamic Image of Black Womanhood
» [Erin Grier](#) (Spelman College (GA))

The NDN, Technology, and Identity in There There
» [Victoria Severiche](#) (Berry College (GA))

Sandra García's Search for Identity and Belonging
» [Kaitlyn Tibbetts](#) (Olivet Nazarene University (IL))

2:15pm **I-09—Love, Power, and Feminism**
Salon F (2)
Chaired by: Felicia Steele and Dakota Mecham

Words at Work: Molding Language and Power in TN
» [Kearra Weiting](#) (Lipscomb University (TN))

Rhetorical Criticism, Unity, and Feminist Rhetorics
» [Marianna Fresquez](#) (University of North Texas (TX))

My Body Hates Me, I Hate It Back
» [Courtney Grable](#) (Lipscomb University (TN))

Wait, This Is Math: Constructivism in Culture
» [Benjamin Ainsworth](#) (University of North Georgia, Gainesville (GA))

The Syntactic Nuances of Saying "I Love You"
» [Megan Brennan](#) (University of Oregon (OR))

2:15pm **I-10—Heroics and Narrative**
Salon G (2)
Chaired by: Zoë Metelerkamp

Freedom in Hybridity in Naipaul's "One Out of Many"
» [Laura Thompson](#) (Union University (TN))

The Pursuit of Identity: The Immigrant Narrative
» [Delaney Jones](#) (Wichita State University (KS))

Weaponizing Media
» [Autumn Pate](#) (Schreiner University (TX))

Hero's Journey in Out of the Silent Planet
» [Maelyn Moss](#) (McNeese State University (LA))

2:15pm **I-11—Subversion and Marginalized Identities**
Market Street Room (1)
Chaired by: Sonia Brown and Zoe O'Malley

The Radical Queer Potential of the Anthology
» [Autumn Koors-Foltz](#) (University of Maine at Farmington (ME))

Otherness in Elizabeth Bishop's Poetry
» [Brianna Burke](#) (McKendree University (IL))

Panopticism in Julia Koets's The Rib Joint
» [Hanna Denton](#) (McNeese State University (LA))

The Subversion of Gender in My Antonia
» [Alexandria Lay](#) (Cottey College (MO))

2:15pm **I-12—Original Prose: In Flux**
Laclede (1)
Chaired by: Shompaballi Datta and Addison Smith

Press, Lever, Raise, Toss
» [Eric Boles](#) (Washington University (MO))

Continued from **Friday, 5 April**

The Butterflies

» [Kelly Taylor](#) (Chapman University (CA))

Colorless Crayons and Colorful Covers

» [Emrick Williams](#) (University of North Georgia, Gainesville (GA))

A Tale of Anastasias

» [Shaylyn Chilek](#) (University of Pittsburgh (PA))

Coffee Shop Chatter

» [Emily Finnell](#) (Biola University (CA))

2:15pm

I-13—Original Prose: Love and Romance

Ballpark 1 (1)

Chaired by: Sherri Craig and Alex Moran

A Little Ditty

» [Jack Gahr](#) (Calhoun Community College (AL))

A Love of My Life

» [Shijia Lyu](#) (The University of Iowa (IA))

The Adversary

» [Abigail Arbeiter](#) (Wichita State University (KS))

Excerpt from Unpublished Novel Dear Daughter

» [Adriana Burton](#) (Eastern Illinois University (IL))

Alistair 6: An Excerpt from Masqued Affair

» [Steve Savoie](#) (Alumni)

2:15pm

I-14—Identity and Authenticity in 20th/21st-Century American Literature

Ballpark 2 (1)

Chaired by: Rachel Carr and Rebecca Kachmar

Fearing the Future: Children and Coping Mechanisms

» [Morgan Hausback](#) (Saint Louis University (MO))

Becoming Offred: Names in Handmaid's Tale

» [Erika Girard](#) (Southern New Hampshire University - Online (NH))

Unraveling Jean Toomer's Twisted Legacy

» [Chenia Walker](#) (Lincoln University, Missouri (MO))

Gender and Nature in Their Eyes Were Watching God

» [Megan Whitson](#) (Lindsey Wilson College (KY))

2:15pm

I-15—Pop Culture: Digital Communication, Heroes, and Legends

Ballpark 3 (1)

Chaired by: Moushumi Biswas and Julianna Browning

Life Writings: Are They Dead and Gone?

» [Madison Koerner](#) (The College of New Jersey (NJ))

Egoists and The Common Man in Moore's Watchmen

» [Megan Anderson](#) (Southern Utah University (UT))

The Illusion of Free Choice in Minority Report

» [Kai DeCarli](#) (University of Oregon (OR))

Ancient History and Mythology in Pokémon X and Y

» [Jessica Gronikowski](#) (The College of New Jersey (NJ))

2:15pm

I-16—Roundtable: "Paper or Plastic? So, you're an English major..."

Salon A-D (2)

Chaired by: Alan Schulte and Jess Landis

Paper or Plastic? So, You're an English Major . . .

» [Rachel Strout](#) (Franklin Pierce University (NH)), [Jenna Parent](#) (Franklin Pierce University (NH)), [Jess Landis](#) (Franklin Pierce University (NH)), [Noah Garofalo](#) (Franklin Pierce University (NH)), [Madelyn Frye](#) (Franklin Pierce University (NH))

Continued from **Friday, 5 April**

2:15pm **I-17—Roundtable: Applying to Graduate Programs in English**
Lindbergh (1)
Chaired by: Kristy Cherry-Randle

Applying to Graduate Programs in English

» [Gwen Niekamp](#) (Florida State University (FL)), [Sarah Destin](#) (Florida State University (FL)), [So Young Koo](#) (Florida State University (FL))

2:15pm **I-18—Roundtable: The Queer Forest in Then the War**
Gateway 2 (2)
Chaired by: Preston Waddoups

The Queer Forest in Then the War

» [Basil Payne](#) (Utah State University, Logan (UT)), [Kris Carpenter](#) (Utah State University, Logan (UT)), [Kaylee Jo Stocks](#) (Utah State University, Logan (UT)), [Zachary Brady](#) (Utah State University, Logan (UT)), [Sierra Slauch](#) (Utah State University (UT))

3:45pm **Common Reader Keynote: Carl Phillips**
Salon A-D (2)
Chaired by: Glen Brewster and Kelly Taylor

» Carl Phillips (Washington University (MO))

4:45pm **Carl Phillips Book Signing**
Walnut Foyer (2)
Chaired by: Autumn Koors-Foltz and Ja'Vontaye Gagum and Eunice Tan and Zoe Talbot and Irelyn Coker

5:45pm **President's Reception for Faculty and Alumni**
Arch View Ballroom (2)

5:45pm **Dinner (on your own)**

6pm **Student Social Salon**
Manchester (4)
Chaired by: Charlotte Beale and DeAni Blake-Britton

8pm **Literary Trivia Pub Night**
Salon A-D (2)
Chaired by: Kaitlynn Sass and Autumn Koors-Foltz

Saturday, 6 April

7:30am **Registration**
Broadway Foyer (1)

7:30am **Chapter Displays**
Grand Foyer (2)

7:30am **Chapter Merchandise Sales**
Grand Foyer (2)

8am **J-01—Creative Nonfiction: Family and Relationships**
Grand Suite 1 (2)
Chaired by: Margaret Oakes and Alexis Marburg

Samak—Nonfiction Creative Writing

» [Lojan Shaker](#) (Barry University (FL))

Hurt People Hurt People

» [Taylor Morgan](#) (Stephens College (MO))

About a Baby (Selected Excerpts)

» [Devora Davis](#) (Loyola Marymount University (CA))

Continued from **Saturday, 6 April**

Where You Lead

» [Erin Hayhurst](#) (Chadron State College (NE))

8am

J-02—Original Poetry: Authenticity and Mental Health

Grand Suite 2 (2)

Chaired by: Linda Miller and Ashe Cendere

I Hate Building Dressers

» [Arthur Noriega](#) (Florida State University (FL))

Recollection and Other Works

» [Emma Fisher](#) (Aurora University (IL))

Flashback Collection

» [Alexis Mills](#) (Southwestern Oklahoma State University (OK))

I Do Not Wish to Lie, nor Do It in the Sun

» [Grace Cram](#) (Palm Beach Atlantic University (FL))

Forever in Flames

» [Elizabeth Klein](#) (The College of New Jersey (NJ))

8am

J-03—Original Poetry: Liminality and Family

Grand Suite 3 (2)

Chaired by: Valerie Vogrin and Autumn Koors-Foltz

Votives

» [Sophie Colalillo](#) (Tulane University (LA))

The Beautiful, the Messy, and the Sad

» [Ezabelle Janssen](#) (University of Southern Mississippi Gulf Coast (MS))

Child Custody Agreement

» [Hallie Haggard](#) (Missouri State University (MO))

The World Keeps Moving

» [Abigail Mascorro](#) (Texas Woman's University (TX))

Irish Wonders

» [Victoria Stoutenger](#) (SUNY, College at Brockport (NY))

8am

J-14—Roundtable: Meet the Sigma Tau Delta Editorial Team

Gateway 1 (2)

Chaired by: Carie King

Meet the Sigma Tau Delta Editorial Team

» Carie King (The University of Texas at Dallas (TX)), [Emma-Li Downer](#) (Drew University (NJ)), [Angela Fantone](#) (Weber State University (UT)), [Kailey Blount](#) (Sacred Heart University (CT)), [Kriss Larkin](#) (Southwestern Oklahoma State University (OK))

8am

J-04—Original Poetry: Loneliness and Mental Health

Gateway 3 (2)

Chaired by: Sigrid King and Avina Sharma

Flying Again

» [Matthew Brown](#) (Calhoun Community College (AL))

I Will Slowly Turn to Face the Sun: A Collection

» [Emily Rowland](#) (Union University (TN))

Confessions of a Depressed Person

» [Hannah Eygabroad](#) (Olivet Nazarene University (IL))

Purple Poems

» [Layne Balla](#) (Carlow University (PA))

Absent Ending Poetry Collection

» [Rafael Rendon](#) (California State University, Long Beach (CA))

Passing Clouds

» [Zane Schmidt](#) (Southern Utah University (UT))

Continued from **Saturday, 6 April**

8am **J-05—Complex Women in William Shakespeare**

Gateway 4 (2)

Chaired by: Diane Steinberg and Sarah Brown

Defending the Attendants in Love's Labour's Lost

» [Emily Strom](#) (University of Dallas (TX))

Othello Reimagined—Desdemona as a Tragic Hero?

» [Joelle DuFault](#) (The College of New Jersey (NJ))

Antony and Cleopatra: A Tale of Love Proved True

» [Janalyn Christensen](#) (Utah Tech University (UT))

Shakespeare's Women Wielding Deception

» [Sami LeJune](#) (Louisiana Tech University (LA))

8am **J-06—Literary Reflections on Gender**

Gateway 5 (2)

Chaired by: Elizabeth Ruleman and Kathryn Jorgensen

Catherine Earnshaw Linton: Death by Marriage

» [Josie Mae Mitchell](#) (Tennessee Wesleyan University (TN))

Women's Education: Wollstonecraft and Woolf

» [Julia Robak](#) (Westfield State University (MA))

Double Lives in Queer Classic Literature

» [Sierra Slauch](#) (Utah State University Statewide (UT))

The Fantasy Genre, Queer Theory and Progressivism

» [Gabriella Goar](#) (California State University, San Bernardino (CA))

8am **J-08—Colonialism and the Language of Freedom and Oppression**

Market Street Room (1)

Chaired by: Diego Uceda and Rica Lelina

Exploring Cultural Appropriation in The Sentence

» [Allison Sadler](#) (Western Kentucky University (KY))

The Consequence of Conquest: Hanif's Red Birds

» [Hannah Leisure](#) (Texas Tech University (TX))

Anti-Colonial Representations of Latin America

» [Ellen Garrison](#) (Elon University (NC))

Spirituality and Slave Narrative

» [Isabelle Covert](#) (SUNY, College at Geneseo (NY))

8am **J-09—Women, Romance, and Justice**

Laclede (1)

Chaired by: Seth Lee and Emily Palmisano

Motherhood in Adeline Mowbray

» [Amelia Willoughby](#) (Lee University (TN))

Sisterhood in Jane Austen's Pride and Prejudice

» [Sophia Sullivan](#) (Saint Leo University (FL))

Opaquely Appropriate Romance in Jane Eyre

» [Reece Danzis](#) (The College of New Jersey (NJ))

The Longing for Socioeconomic Justice

» [Hannah Sanchez](#) (Midland College (TX))

8am **J-10—Trauma, Science Fiction, and the Gothic**

Ballpark 1 (1)

Chaired by: Madeline Gangnes and Erin Quinn

Alien Landscapes Portrayed in The Drowned World

» [Megan Zabrowski](#) (The University of Scranton (PA))

Nature and Nurture's Effect on Innocents

» [Greta Soos](#) (The College of New Jersey (NJ))

Continued from **Saturday, 6 April**

Never Let “Me” Go: Ishiguro and Schopenhauer

» [Max Kresock](#) (High Point University (NC))

The Musical Mirror of Joyce’s Life in Ulysses

» [Shelby Roth](#) (Palm Beach Atlantic University (FL))

8am

J-11—Reflections in Literature

Ballpark 2 (1)

Chaired by: Ellen Foster and Harrison Jenkins

Spiralic Time in Dimaline’s Marrow Thieves

» [Margaret Green](#) (Southern Utah University (UT))

Choi’s Language Integration “The World . . . Goes On”

» [Haylee Morman](#) (Mississippi State University (MS))

Happiness in Samuel Johnson’s Rasselas

» [Taylor Galavotti](#) (High Point University (NC))

Dancing with the Devil: Dr. Faustus and Hadestown

» [Kira Dewey](#) (Palm Beach Atlantic University (FL))

Paranoia in Moderist and Post-Modernist Literature

» [Elsa Glover](#) (Schreiner University (TX))

8am

J-12—Original Prose: In Flux and Transformation

Ballpark 3 (1)

Chaired by: Mildred Lewis and Heather Kaatz

The First Publication of The Future World

» [Jordan Spector](#) (Washington University (MO))

Dear Dad,

» [Christian Chijioko](#) (Liberty University (VA))

What if We Met Older Us?

» [Bethel Mesfin](#) (University of Pittsburgh (PA))

Roots of the Garden

» [Megan Basten](#) (Loras College (IA))

Secrets

» [Nayelli McDowell](#) (Union University (TN))

8am

J-13—Roundtable: Teaching at the Two-Year College: Big Things Come in Small Packages

Lindbergh (1)

Chaired by: Joan Reeves

Teaching at the Two-Year College: Big Things Come in Small Packages

» [Stacy Egan](#) (Midland College (TX)), [Marie Hendry](#) (State College of Florida-Venice (FL)), [Bradley Sides](#) (Calhoun Community College (AL)), [Crystal Sosa](#) (Odessa College (TX))

8am

J-15—Roundtable: Zoopoetics in Then the War: Animals and Chimeras

Gateway 2 (2)

Chaired by: Kris Carpenter

Zoopoetics in Then the War: Animals and Chimeras

» [Aimee Olson](#) (Utah State University, Logan (UT)), [Elisabeth Pace](#) (Utah State University, Logan (UT)), [April Allbee](#) (Utah State University Statewide (UT)), [Shayna Butler](#) (Utah State University, Logan (UT)), [Dakota Mecham](#) (Utah State University (UT))

8am

J-07—Women, Feminism, and Cultural Myths

Manchester (4)

Chaired by: Alan Rauch and Destiny Jones

The Evolution of Cinderella

» [Erin Pelletier](#) (SUNY, College at Brockport (NY))

Continued from **Saturday, 6 April**

Analyzing Gender Construction through Demon Slayer

» [Alexandria Card](#) (The College of New Jersey (NJ))

This Barbie is a Liberal Feminist

» [Ashley Perry](#) (Harriet L. Wilkes Honors College (FL))

Daphne Blake: Damsel to Empowered Woman

» [Mackenzie Hill](#) (Robert Morris University (PA))

9:30am **K-01—Creative Nonfiction: American Values and Work**

Grand Suite 1 (2)

Chaired by: Jayanti Tamm and Isabel Stollsteimer

The Cowboy Blues

» [Ryan Pulaski](#) (Liberty University (VA))

Somewhere in the Middle

» [Jerrica Asbeck](#) (Southern Illinois University Edwardsville (IL))

Becoming a Teacher

» [Dariana Gunderson](#) (North Dakota State University (ND))

Is This Free?

» [Robert Dilling](#) (Arkansas Tech University (AR))

9:30am **K-02—Creative Nonfiction: Family and Relationships**

Grand Suite 2 (2)

Chaired by: Isabella Libreros and Michaelann Nelson

Two Roads

» [Jacob Harvey](#) (Slippery Rock University (PA))

red

» [Charlotte Salotto](#) (SUNY, College at Geneseo (NY))

Beet Hands & Blueberry Lips

» [Kyra Lipetzky](#) (Saint Vincent College (PA))

It's Just Shy of Mother's Day

» [Satyne Doner](#) (Saint Leo University (FL))

9:30am **K-03—Original Poetry: Thoughts on Trauma**

Grand Suite 3 (2)

Chaired by: Jackson Bulman and William C. Johnson

Little Deaths

» [Shiloh Bergman](#) (Coastal Carolina University (SC))

Archeology of the Self (an excerpt)

» [Hailey Watt](#) (University of Oregon (OR))

The Glass Picket Fence

» [Olivia Nguyen](#) (The College of New Jersey (NJ))

Grief Personified

» [Hannah Holliday](#) (Wichita State University (KS))

From Dead To Worse

» [Sa'Nya Polo](#) (University of North Carolina at Charlotte (NC))

9:30am **K-14—Roundtable: Collective Memory and Trauma In Poetics**

Gateway 1 (2)

Chaired by: Diane Steinberg

Collective Memory and Trauma In Poetics

» [Zoe Talbot](#) (The College of New Jersey (NJ)), [Sofia Escobar](#) (Hartwick College (NY)), [Lauren Tragale](#) (The College of New Jersey (NJ)), [Autumn Koors-Foltz](#) (University of Maine at Farmington (ME))

9:30am **K-04—Gender and Agency in 19th-Century America**

Gateway 3 (2)

Chaired by: Yaisa Mann and Jalyynn Miles

Continued from **Saturday, 6 April**

Finding Female Agency in Little Women

» [Emily Barlow](#) (St. Joseph's College, NY, Long Island Campus (NY))

Queering Gender in the 19th Century

» [Shannon Ervay](#) (SUNY, College at Geneseo (NY))

Devoted Mundanity and Queer Genre in Dickinson's Late Letter-Poems

» [Mia Donaldson](#) (SUNY, College at Geneseo (NY))

9:30am **K-05—Chaucer: Gender, Masculinity, and the Wife of Bath Gateway 4 (2)**

Chaired by: Seth Lee and John Hollihan

Being the Man: Fragile Masculinity in The Canterbury Tales

» [Phoebe Joy](#) (St. Olaf College (MN))

The Wife of Bath and an Idealistic World

» [Samantha Giesen](#) (Morningside University (IA))

The Wife of Bath: Feminist or Not?

» [Madison Mozak](#) (Morningside University (IA))

Rehabilitative Justice in The Wife of Bath's Tale

» [Lauren Martin](#) (Lincoln Memorial University (TN))

9:30am **K-06—Queer Identity, Power, and the Body Gateway 5 (2)**

Chaired by: Sarah Dangelantonio and Joselyn Mairena

Heteronormativity as Death in Balzac's Sarrasine

» [Brandon Goins](#) (Midwestern State University (TX))

Mortal Bodies, Divine Lies

» [Heath Rosser](#) (Oklahoma Christian University (OK))

Queer Identity in Monsieur Vénus

» [Grey Nebel](#) (University of North Georgia, Gainesville (GA))

Discovery of Identity in The Worst Person in the World

» [Melody Reed](#) (Missouri Southern State University (MO))

9:30am **K-08—Roundtable: In Flux: English Language Arts Education in 2024**

Market Street Room (1)

Chaired by: Christopher Lockwood

In Flux: English Language Arts Education in 2024

» Christopher Lockwood (National English Honor Society), [Cami Badman](#) (National English Honor Society), [Dave Hebestreit](#) (National English Honor Society), [Breanne Hicks](#) (National English Honor Society), [Lindsey Ward](#) (National English Honor Society), [Ryan Karpovage](#) (National English Honor Society)

9:30am **K-09—Text and Illustration: Graphic Novels as Literature**

Laclede (1)

Chaired by: Patricia Tarantello and Kaitlen Wood

Trauma in the Development of a Strong Black Woman

» [Michael Prescott Jr.](#) (Philander Smith University (AR))

Narrative Effects in Art Spiegelman's Maus

» [Grace Allen](#) (Florida State University (FL))

Fun Home: Fluency in Gender Performance

» [Matthew Chinique](#) (The College of New Jersey (NJ))

Analyzing Trauma through Transference

» [roshni dave](#) (The College of New Jersey (NJ))

Stone Fruit: Inner Wildness and Queer Identity

» [Amy Webb](#) (Luther College (IA))

Continued from **Saturday, 6 April**

9:30am **K-10—Beauty and Change**
Ballpark 1 (1)
Chaired by: Emad Mirmotahari and Kaitlynn Sass

Grace Nichols' Form: Indentations in Conversation
» [Taylor Tunstall](#) (The University of the South (TN))

Virginia Woolf, Modernism, and Perception
» [Agaretha Kosasih](#) (Duquesne University (PA))

Reflecting upon Reflections in Woolf's Fiction
» [Christine Osborne](#) (Lamar University (TX))

Hey Dol! Merry Dol!: A Song of Joy
» [Thomas Green](#) (Palm Beach Atlantic University (FL))

9:30am **K-11—War, Paradox, and the Holocaust**
Ballpark 2 (1)
Chaired by: Tracy Floreani and Kalena Holeman

Theft, Uncertainty, and Suffering in The Shawl
» [Ryan McCafferty](#) (Mississippi State University (MS))

The Concept of Time in How You Stop the Time War
» [Claire Kim](#) (The College of New Jersey (NJ))

Anti-war Views in A Farewell to Arms and Catch-22
» [Tyler Bell](#) (Arkansas Tech University (AR))

9:30am **K-12—Original Prose: Explorations of Family**
Ballpark 3 (1)
Chaired by: Kara Stogsdill and Camille Alexander

Elephants in the Room
» [Aysia Walton](#) (Coastal Carolina University (SC))

The Turtle

» [Micah Gilmer](#) (Liberty University (VA))

Am I a Man Now?

» [Jonathan Wood](#) (Furman University (SC))

Roots

» [Bree Johnson](#) (University of North Carolina at Charlotte (NC))

The Man in Our Field

» [Chrysalis Gilmer](#) (Friends University (KS))

Our Threads

» [Melanie Diaz](#) (University of North Carolina at Charlotte (NC))

9:30am **K-13—Roundtable: Fanfiction: The Hidden Literary Genre**
Lindbergh (1)
Chaired by: Ami Comeford

Fanfiction: The Hidden Literary Genre

» Charlotte Beale (Utah Tech University (UT)), [Janalyn Christensen](#) (Utah Tech University (UT)), [Molly Morby](#) (Utah Tech University (UT)), [Savanna Romero](#) (Utah Tech University (UT))

9:30am **K-15—Roundtable: Subversive Syllabi**
Gateway 2 (2)
Chaired by: Carie King

Subversive Syllabi

» [Kris Larkin](#) (Southwestern Oklahoma State University (OK)), [Farah Siddiqui](#) (The University of Texas at Dallas (TX))

9:30am **K-07—Detection and Three Men in a Boat**
Manchester (4)
Chaired by: Josh Nichols and Matt Hlinak

The Dupin Mysteries of Edgar Allen Poe

» [Elijah Wilhelm](#) (Park University (MO))

Continued from **Saturday, 6 April**

“Thing-Power” in Three Men in a Boat

» [Matthew Ratcliff](#) (Belmont Abbey College (NC))

Oliver Twist as Detective Fiction

» [Brody Eldridge](#) (Palm Beach Atlantic University (FL))

The Varying Methodologies in Detective Fiction

» [Jillian Tremblay](#) (The University of Scranton (PA))

11am **L-01—Creative Nonfiction: Transformation and Relationships**

Grand Suite 1 (2)

Chaired by: Hillary Coenen and Kennedy Stepongzi

From Ashes to Embers

» [Grace Nelson](#) (Southwestern Oklahoma State University (OK))

The Ice Cream Truck Lady

» [Marianne Prax](#) (Missouri State University (MO))

The Table

» [Michaela Aleman](#) (Midwestern State University (TX))

“The Heart Has Its Reasons”: A Pascalian Testimony

» [Natalie Alderton](#) (Pepperdine University (CA))

11am **L-02—Creative Nonfiction: Trauma and Relationships**

Grand Suite 2 (2)

Chaired by: Kourie Edwards and Lindsey Ward

The Grieving House

» [Kathryn Walter](#) (Emmanuel College (MA))

Death of the Memory Seminar

» [Sarah Makinen](#) (Northern Michigan University (MI))

Amy and the Marshmallows

» [Maeve Rotolo](#) (Lesley University (MA))

What's in a Name

» [Abigail Summers](#) (Slippery Rock University (PA))

11am **L-03—Original Poetry: Identity and Relationships**

Grand Suite 3 (2)

Chaired by: Lauren Farrell and Breanne Hicks

False Fruit, True Love

» [Dirk Wynn](#) (Chatham University (PA))

Wonderstruck

» [Ella Wisniewski](#) (University of Notre Dame (IN))

Queer Womanhood

» [Emily Miller](#) (University of Central Florida (FL))

Unforgotten Fragments

» [Juliana Michelbrink](#) (Purdue University Northwest (IN))

11am **L-14—Roundtable: "Ways Change": Culture and Ecology in Flux in Dune**

Gateway 1 (2)

Chaired by: Damon Franke

"Ways Change": Culture and Ecology in Flux in Dune

» Damon Franke (University of Southern Mississippi Gulf Coast (MS)), [Ezabelle Janssen](#) (University of Southern Mississippi Gulf Coast (MS)), [Amin Whitmore Jr](#) (University of Southern Mississippi Gulf Coast (MS)), [Brooke Bishop](#) (University of Southern Mississippi Gulf Coast (MS)), [Michael Keyes](#) (University of Southern Mississippi Gulf Coast (MS)), [Hunter Padgett](#) (University of Southern Mississippi Gulf Coast (MS))

11am **L-04—Original Poetry: Finding Identity and Exploring Family**

Gateway 3 (2)

Chaired by: Lorah Murphy and Michael Penna

Continued from **Saturday, 6 April**

A Drop in the Ocean

» [John Carroll](#) (Mercyhurst University (PA))

From the Field Meadow

» [Peyton Van Deusen](#) (Clark University (MA))

Queerness in Nature

» [Basil Payne](#) (Utah State University, Logan (UT))

Wisdom and Peru

» [Chanel Hoyos](#) (Palm Beach Atlantic University (FL))

I Am Your Spaniel

» [Cara Bonavita](#) (Mercyhurst University (PA))

11 am

L-05—Shakespearean Reflections

Gateway 4 (2)

Chaired by: Amy Gates and Madison McLaughlin

Shaping the Stage: The Master of the Revels

» [Jade Gatewood](#) (University of Southern Indiana (IN))

Displacement, Betrayal, and Demonization

» [Isabelle Walker](#) (Missouri Southern State University (MO))

Hamlet: A Psychoanalysis of the Prince

» [Savannah McDonald](#) (Thomas More University (KY))

The Justice of Giving in Shakespeare's King Lear

» [Kris Carpenter](#) (Utah State University, Logan (UT))

11 am

L-06—Women, Love, and the Feminine

Gateway 5 (2)

Chaired by: Madison Mills and Dave Hebestreit

Escaping the Eternal Woman in A Room with a View

» [Eowyn Stewart](#) (Abilene Christian University (TX))

Defining Femininity in the Victorian Era

» [Clara Monson](#) (Shepherd University (WV))

Mr. and Mrs., or, Dr. and Dr.

» [Miranda Miller](#) (The University of Iowa (IA))

The Paradox of Love: As Seen in Virgil's Aeneid

» [Diana Morley](#) (SUNY, College at Geneseo (NY))

11 am

L-08—Literary Concepts of Power and Performance

Market Street Room (1)

Chaired by: Mary-Catherine Berger and Tara Carter

Joe Trace and the Hero Upside Down

» [Ashley Barletta](#) (Mercyhurst University (PA))

The Queer Experience and “The Junk Drawer”

» [Zoe Talbot](#) (The College of New Jersey (NJ))

Performance and Politics in Marlowe's Edward II

» [Talia Verrecchio](#) (The College of New Jersey (NJ))

Anne Locke's Petrarchan Imitation

» [Reaghan Hale](#) (Eastern Illinois University (IL))

11 am

L-09—British Romanticism, Nature, and the Divine

Laclede (1)

Chaired by: Sarah Dangelantonio and Matthew Brown

Power, Control, and Conquest in Byron & Wordsworth

» [Vincent Chang](#) (The College of New Jersey (NJ))

Wordsworth's Use of Nature

» [Sarah Brown](#) (Morningside University (IA))

Continued from **Saturday, 6 April**

Zoroastrianism and Nature in Byron's Manfred

» [Jacob O'Dell](#) (College of the Ozarks (MO))

Hell in Structure, Function, and Realization

» [Hallie Wielfaert](#) (Lee University (TN))

11 am **L-10—Psychoanalysis and Literary Themes**

Ballpark 1 (1)

Chaired by: Matthew Moon and Christopher Lockwood

Psychological Prisoners of Nightwood

» [Sean McConnell](#) (Lipscomb University (TN))

Normal People Doing Normal Things

» [Mary Flowers](#) (Otterbein University (OH))

Less as More: Fetishizing Amputation in Headcheese

» [Katelynn Adrian](#) (McNeese State University (LA))

A Freudian Analysis of The Remains of the Day

» [Jowan Williams](#) (High Point University (NC))

11 am **L-11—Religion and the Mind**

Ballpark 2 (1)

Chaired by: Melinda Mullet and Jayne Higgins

A Slip and a Pastime: James Salter Meets Freud

» [Pedro Torres-Paraizo](#) (Coastal Carolina University (SC))

God, Devil, and Humanity in As I Lay Dying

» [Abigail Rogers](#) (University of North Georgia, Gainesville (GA))

Religion in The Intuitionist

» [Kyle Ray](#) (Louisiana Tech University (LA))

Silent Film and the Legitimacy of Nonverbal Rhetoric

» [Aubrey Hirsch](#) (Pepperdine University (CA))

11 am **L-12—Original Prose: Reflections on Trauma and Death**

Ballpark 3 (1)

Chaired by: Preston Waddoups and Cami Badman

The Color of Their Love

» [Roubina Agha](#) (American University of Kuwait (International))

Entertaining the Dead

» [Katherine Bechter](#) (Liberty University (VA))

Trauma

» [Alec Kissoondyal](#) (University of Florida (FL))

Mini Me

» [Sabrina Lacy](#) (The University of Iowa (IA))

Haunted by the Ghost of You

» [Robin Alvarez](#) (Sul Ross State University (TX))

Six Years since Yesterday

» [Irelyn Coker](#) (Southern Arkansas University (AR))

11 am **L-13—Roundtable: Value Added: English and Transferable Skills**

Lindbergh (1)

Chaired by: Leigh Dillard

Value Added: English and Transferable Skills

» Leigh Dillard (University of North Georgia, Gainesville (GA)), [Therese Holzapfel](#) (PennWest Clarion (PA)), [Olivia Mull](#) (Fort Hays State University (KS)), [William Saccavino](#) (University of North Georgia, Gainesville (GA)), [Avina Sharma](#) (The College of New Jersey (NJ)), [Gracen Wrenn](#) (University of North Georgia, Gainesville (GA))

Continued from **Saturday, 6 April**

11am **L-15—Roundtable: Liminal Love in Then the War**
Gateway 2 (2)
Chaired by: Aimee Olson

Liminal Love in Then the War

» [Ashleigh Sabin](#) (Utah State University (UT)), [William Clark](#) (Utah State University, Logan (UT)), [Zada Stephens](#) (Utah State University, Logan (UT)), [Ariel Longoria](#) (Utah State University (UT)), [Katharine Tesar](#) (Southern Utah University (UT))

11am **L-07—Diverse Perspectives in Literary Texts**
Manchester (4)
Chaired by: Gloria Hochstein and Makayla Banton

A Raisin in the Sun Book and Film Comparison

» [Maya Wood](#) (University of Southern Mississippi Gulf Coast (MS))

You Promote Racism like a Girl!

» [Annie Kirkpatrick](#) (Mississippi State University (MS))

How We Grow through Archetypes & Tell Their Tales

» [Bethany Daigle](#) (Colorado Mesa University (CO))

Analyzing Social Class in South Korea and Parasite

» [Nina Fillari](#) (Azusa Pacific University (CA))

12:45pm **Convention Awards Luncheon**
Salon A-D (2)

Sigma Tau Delta's Centennial Celebration

This year marks the 100th anniversary of Sigma Tau Delta, the English Honor Society!

On May 1st of 1924, Sigma Tau Delta began its official promotion of the English language—by honoring the first students who would represent its motto: sincerity, truth, design. Founder Judson Q. Owen had been sponsoring an English club at Dakota Wesleyan University in Mitchell, SD, whose popularity inspired him to reach out to college English professors across the nation with a striking proposition: to create a national English honor society. By its first national convention in Des Moines, IA, less than one year later, the Society's original seven charter chapters had expanded to thirty-one. Learn more about Sigma Tau Delta's [historical highlights](#).



A century later, the Society has expanded its original mission and diversified its membership. Our 794 chapters encompass thousands of members and represent more than 200,000 alumni. Through the [National English Honor Society](#) (launched in 2005) and [English Language Arts Honor Society](#) (launched in 2023), we have extended the honor society to high schools and middle schools. Our love for English and English-related disciplines continues to shape us as an organization. In celebration of our 100th anniversary, the Society invites members to join us at the local, regional, national, and even international levels.

While we will officially kick off the Centennial at our [2024 Convention](#) in St. Louis, we invite your chapter to begin the celebrations closer to home. Over the course of the year, members may want to participate in numerous ways. Here are some of the ways we'll be celebrating over the coming year:

- **Giving back** to the Society with a donation celebrating the Centennial. We'll be [challenging](#) each of our chapters to fundraise in an amount of their choosing. Whether that's \$19.24, \$100, \$192.40, or even more, these donations from chapters will support (among other things) the newest of our scholarships;
- **Paying it forward** through the "[100 for 100](#)," an idea our [Student Leadership](#) crafted;
- **Investing in** new [Centennial merchandise](#)—whether outfitting your graduates in Centennial-specific stoles and medallions, collecting and displaying stickers commemorating the decades, or adding to your T-shirt and tote collections, members will have new and exciting options for displaying their Sigma Tau Delta pride;
- **Applying** for the **1924 Scholarship**, the latest way in which the organization continues to support its members. Each year, the recipient of this scholarship will be someone who represents the high standards of our mission and vision as an organization;
- **Joining** webinars and Regional events designed to offer a deeper dive into our discipline(s) without leaving the comfort of your area—or even your own home; and
- **Attending** the 2024 and 2025 conventions, which highlight well-known and upcoming authors, celebrate and feature our members as presenters, and strengthen connections between members. Students return to their own chapters brimming with ideas for new events.

As we celebrate the centennial of Sigma Tau Delta, we also want to look ahead to our next hundred years—and continue being the forces that shape both the discipline and the world. After all, we're transforming the world with words.

English Honor Societies

Since its inception in 1924, **Sigma Tau Delta** International English Honor Society has modeled its mission to confer distinction for high achievement, promote interest in English language and literature, foster exemplary character and fellowship, and exhibit high standards of academic excellence. In 1972, Sigma Tau Delta was accepted as a member of the Association of College Honor Societies (ACHS). Currently the Society has grown to include over 790 chapters with more than 1,000 Faculty Advisors; approximately 8,500 members are inducted annually. Sigma Tau Delta has continued to flourish and expand, branching out in 1996 to found Sigma Kappa Delta for the growing two-year college system, and in 2004, it established the National English Honor Society for secondary school students and faculty. The English Language Arts Honor Society for students in grades 6–9 was launched in 2023. Sigma Tau Delta is the second largest honor society in the ACHS.



Sigma Kappa Delta, the English Honor Society for two-year colleges, functions much like Sigma Tau Delta. Membership benefits include prestige of membership in a national honor society, eligibility to apply for scholarships and awards, leadership opportunities, and fellowship among members on a local, regional, and national level who share an interest in literature, the English language, and fine arts. Sigma Kappa Delta has 81 chapters and annually partners with Sigma Tau Delta to plan and promote the international convention.



National English Honor Society (grades 9-12) membership is an honor bestowed on high-achieving students who have experienced the power of literature, the pleasures of good writing, and the excitement of language studies. NEHS provides opportunities for students to be recognized for their achievement in the following ways: through worldwide academic recognition, global higher education scholarships, opportunities for creative expression (creative writing, speech and performance, filmmaking), leadership skills development, and community service projects.



The **English Language Arts Honor Society** (grades 6-9) is a vibrant community of students and teachers, from all walks of life, united in their passion for the English Language Arts, and determined to excel academically. Through our programs, activities, grants, and awards, we encourage student excellence and nurture potential.



Sigma Tau Delta Journals

Sigma Tau Delta Rectangle (founded in 1931) is an annual journal of creative writing that publishes fiction, nonfiction, and poetry. Submissions should not exceed 2,500 words.

Sigma Tau Delta Review (founded in 2005) is an annual journal that publishes critical essays on literature, essays on rhetoric and composition, and essays devoted to pedagogical issues. Submissions should not exceed 3,000 words, excluding notes and works cited. Critical essays must follow the Modern Language Association style guidelines as defined in the *MLA Handbook for Writers of Research Papers* (latest edition).



Sigma Tau Delta Journal Writing Award Winners for 2024

Frederic Fadner Critical Essay Award

Ian Hearn

“Nothingness, Depravity, and the Necessity for Christian Charity: Tragedy and Hope in Shakespeare’s *King Lear*”
College of the Ozarks (MO)

Eleanor B. North Poetry Award

Alexandra Gonzales

“A Road in Pennsylvania after ‘A Supermarket in California’ by Allen Ginsberg”
Lebanon Valley College (PA)

E. Nelson James Poetry Award

Eunice Tan

“Malayan Chorus, Our Voices Arise, Our Harmonies Become the Melodies of Song-Story”
Union University (TN)

Herbert Hughes Short Story Award

Mary Brown

“Why I Should Have Never Left: A Story in One Sentence”
Wake Forest University (NC)

Elizabeth Holtze Creative Nonfiction Award

Erika Girard

“Ms. Monkey Bread”
Southern New Hampshire University (NH)

Rectangle Reading

Attend the readings of authors published in the 2024 edition of the *Rectangle*.

Friday, April 3 | 9:00-10:00 | Salon A-D, 2

Presenters:

- Alexandra Gonzalez—“A Road in Pennsylvania after ‘A Supermarket in California’ by Allen Ginsberg”
- Eunice Tan—“Malayan Chorus, Our Voices Arise, Our Harmonies Become the Melodies of Song-Story: In Response to the Japanese Southern Expeditionary Army’s Marching Song of WWII”
- Deani Blake-Britton—“In Another Universe”
- Kira Dewey—“Swan Song”
- Tyler Edwards—“Extraction” & “recollection”
- Sofia Escobar—“Ex Vivo” & “Like Father, Like Daughter” & “The Autonomy of Art”
- Marisa Frisk—“Hummingbird on a Wire”
- Zoe Talbot—“Alphabet Soup” & “10 Reasons I Kept My Name”

2025 Centennial Journal Submissions

Submission Deadline:
April 15, 2025



2025 Convention

March 19 – 22, 2025, Pittsburgh, PA

Convention Theme: One of Ours

The Sigma Tau Delta Convention will return to Pittsburgh in 2025. Over the next few months, we will select keynote speakers, the Common Reader, and reveal other exciting events.

We are pleased to announce Willa Cather as the Spotlight Author. Cather spent over ten years living and working in Pittsburgh, but she has additional ties to many Sigma Tau Delta Regions. Cather's connection to various places influenced our adoption of her Pulitzer Prize winning novel's title for our 2025 Convention theme: One of Ours.


In the coming months, please help us celebrate her work and watch for more information about next year's convention. We consider you "one of ours" and hope you will join us in Pittsburgh as we bring our Society's Centennial celebration to a close.

Convention Co-Chairs:

Shannin Schroeder, Leigh Dillard, & Kevin Stemmler



Willa Cather circa 1912. Photographer: Aime Dupont Studio, New York. Courtesy of Wikimedia Commons.




EARN YOUR MASTER'S DEGREE IN ENGLISH

ONLINE | ON CAMPUS | ANYWHERE

Fort Hays State University offers a Master of Arts (MA) in English to take your studies to a deeper level. With coursework available year-round, you can enjoy the flexibility of attending on-campus or online to meet your scheduling and learning needs.

SET ON OUR MA IN ENGLISH? We pride ourselves on quality education at an affordable price. Ask us about our on-campus graduate teaching assistantships, study abroad opportunities, and more!

CONSIDERING OTHER OPPORTUNITIES? We offer 18 credit hours of graduate English coursework to meet dual credit and adjunct faculty qualifications. We also have master's degree programs in literary arts, history, and art history!



FORT HAYS STATE UNIVERSITY

READY TO LEARN MORE?
fhsu.edu/grad/programs
gradschool@fhsu.edu
english@fhsu.edu

Supporters

**THANK YOU
FOR
SUPPORTING
OUR 2024
CONVENTION**



A teacher. A student. And a book.
myalee.com



GrammarFlip



Supporters

